

# The CNR Newsletter

VOLUME 6 ISSUE 1

SEPTEMBER 2011

## IN THIS ISSUE

UPDATE	1
RWJF NURSE FACULTY SCHOLAR AWARD	2
FACULTY SCHOLARLY ACTIVITIES	3
CURE GRANT PROJECT UPDATE	4
FIRST PLACE POSTER AT MNRS	4
GRADUATE STUDENTS' SCHOLARLY ACTIVITIES	6
SCHOOL OF NURSING RESEARCH GRANTS	7
FACULTY MEMBER PUBLISHES BOOK	7
NIH SUMMER INSTITUTE ON GENETICS	8
PHD AND DNP GRADUATES	9

## UPDATE - Center for Nursing Research

As the Center for Nursing Research closed another academic year, it is important to reflect on its accomplishments. The FORS met regularly, and participants reviewed several submissions including research proposals, manuscripts for submission to journals, ideas for manuscripts, responses to editors, and general ideas for programs of research. A survey was sent to the faculty requesting input regarding FORS. The response from faculty was encouraging and the feedback was positive; survey results will be shared with faculty in the fall. Suggestions were made regarding how to improve FORS, and so it should be a good year ahead!

The Center for Nursing Research competitive Intramural Grant Program received excellent applications this year and, as a result, three awards were granted as start-up funds for faculty (see article on page 7). In addition, two doctoral student early research pre-dissertation posters were awarded scholarships through the CNR to attend the

Eastern Nursing Research Society (ENRS) conference in March in Philadelphia: Noreen Houck for her *Integrative Review On Workplace Aggression In Nursing and Patient Safety* and April Kidd for *Adherence to Mammography Screening: A Concept Analysis*.

The CNR supported the presentation by Christine Kovach, PhD, RN, FAAN from the University of Wisconsin-Milwaukee to faculty, DNP and PhD students during Doctoral Residency week. The SON welcomed Dr. Kovach warmly, and her presentation received accolades! We look forward to sponsoring many more presentations over the next year as well as some workshops. Faculty suggestions are always welcome.

A Director of the CNR has not yet been found but all are urged to get the word out to friends and colleagues in an attempt to garner more submissions for the position.

Kathy Sekula, FORS Facilitator



### ENRS CONFERENCE

The CNR awarded scholarships to doctoral students Noreen Houck and April Kidd to attend the Eastern Nursing Research Society (ENRS) conference in Philadelphia in March. There, they presented their early research pre-dissertation posters, *Integrative Review on Workplace Aggression in Nursing and Patient Safety* (Houck, left) and *Adherence to Mammography Screening: A Concept Analysis* (Kidd).



Center for Nursing Research  
DUQUESNE UNIVERSITY

# Dr. Alison Colbert Receives RWJF Nurse Faculty Scholar Award



**Dr. Alison Colbert**, Assistant Professor of Nursing, is working to improve the health of women recently released from jail in a multiyear research project that has garnered funding from the Robert Wood Johnson Foundation (RWJF) Nurse Faculty Scholars Program. As part of the three-year, \$350,000 project, Colbert is developing an intensive, health care case management program for women immediately after they are released from incarceration. The program's aim is to discover and develop ways that nurses might help this vulnerable population stay healthy when they return to their communities.

Women who have spent time in jail, Colbert explains, are at higher risk for both physical and mental illness than both male offenders and women who have not been incarcerated. They also frequently have a history of substance abuse or have been victims of violence. This means that they have complex needs that require targeted interventions intended to address their unique circumstances. While incarcerated, inmates' welfare is the responsibility of jail administrators, so health

care may be more readily available and accessible while behind bars than after release. Colbert believes that an effective program would maximize the potential gains made by offenders during incarceration, such as taking medications regularly and as prescribed by helping them set-up new routines at home.

In addition, Colbert is working to help these women set short- and long-term health goals and develop plans to reach those goals. She also wants to improve the likelihood of them building long-term relationships with health professionals. Colbert first started working with inmates while pursuing a master's in community health at the University of Texas, Austin. She realized at the time that there were a lot of ways to provide health care to people that did not involve doctor's offices and hospitals. "There is a real opportunity in jail to maximize the impact of health care," says Colbert. "One of the things that brought me to Duquesne was the community health focus of the nursing program."

In addition to funding the research, the Nurse Faculty

Scholars Program also provides opportunities for Scholars to expand their skills as faculty members. Last year, Colbert was fortunate enough to attend several conferences and educational events, including sessions on advanced technology in teaching and the launch of the RWJF's "Campaign for Action," the program designed to implement recommendations for the IOM Report "The Future of Nursing." Over the summer, Colbert attended a seminar at the UNC Summer Institute on developing intervention grants. "Having a week to really focus on your research ideas and to develop your intervention with input from 20 other nurse researchers is an amazing opportunity."

Colbert's upcoming research will provide opportunities for students to assist with data collection and other aspects of the project. In addition, Dr. L. Kathleen Sekula, associate professor of nursing, and Dr. Tammy Hughes, chair of the Department of Counseling, Psychology and Special Education in the School of Education, serve as mentors for the project.

# Faculty Scholarly Activities

## May 2010 thru May 2011



**Colbert, A.,** Panosky, D., & **Zoucha, R.** (2010). Refereed Paper Presentation: Forensic Nursing and High Risk Women Offenders: Opportunities for Innovation, sponsored by the International Association of Forensic Nurses, at the 18th Annual Scientific Assembly, in Pittsburgh, PA, on October 27-30, 2010.

**Colbert, A.M.,** Kim, K.H., Sereika, S.M., & Erlen, J.A. (2010). An Examination of the Relationships Among Gender, Health Status, Social Support, and HIV-Related Stigma, *Journal of the Association of Nurses in AIDS Care*, 21(4), 302-313.

**Colbert, A., & Zoucha, R.** (2010). Disaster Care: Care of Victims of Natural Disasters. In M. K. Douglas & D. F. Pacquiao (Eds.). *Journal of Transcultural Nursing: Core Curriculum for Transcultural Nursing and Health Care*, 21(Supplement 1), (pp. 268S-272S). Thousand Oaks, CA: Sage.

**Culleiton, A.** (2010). Pointing New Nurses in the Right Direction, *Nursing 2010 Critical Care*, 5(4), 18-23, doi:10.1097/01.CNN.0000384058.31961.09.

**Donley, Sr. R.** (2010). Invited Presentation: The Health Professions, sponsored by Federal Executives Seminar, USHSU, in Arlington, VA, on April 21 and September 11, 2010.

**Donley, Sr. R., & Sarsfield, E.** (2010). Invited Presentation: Re-investing in Social Justice, sponsored by APHA, in Denver, CO, on November 9, 2010.

**Donley, S.R.** (2011). Reflective response to career development strategies to support nurses engaged in doctoral advanced nursing practice: Understanding and mining opportunities. In H. M. Dreber & M. E. Smith Glasgow (Eds.). *Role Development for Doctoral Advanced Nursing Practice* (pp. 157-160). New York, NY: Springer.

Rourke, L., Kanuka, H., & **Goodfellow, L.** Distance doctoral programs: A case study in nursing. The annual meeting of the Canadian Network for Innovation in Education, Hamilton, Canada. Podium Presentation, May 2011, refereed.

MacDuff, C., Copeland, S., **Goodfellow, L.,** Nolfi, D., Leslie, G., & Blackwood, D. (2010). Nursing Research Seen Through the Window of Poetry, sponsored by the Royal College of the United Kingdom, in North Yorkshire, United Kingdom, on May 16-18, 2011.

**Hardy, E.,** Corte, C., Finnegan, L., Kim, M., Matthews, A., & Wilbur, J. (2010). Research Grant: Racial Identity and African American Acculturation as Predictors of Physical Activity in Midlife African American Women, sponsored by American Nurses Foundation, Inc., \$7,495 (08/10-10/10).

**King, M., & Pappas-Rogich, M.** (2010). Refereed Paper & Poster Presentation: Parish

Nurses: Promoting Health of Elderly Clients, sponsored by the Rita McGinley Symposium Exploring Social Justice for Vulnerable Populations: The Face of the Elderly, in Pittsburgh, PA, on September 23-24, 2010.

**King, M., & Wilt, K.** (2010). Refereed Poster Presentation: Through the Students' Eyes: Perceptions of Learning Using High-Fidelity Simulation, sponsored by the 2010 Research Conference, Building Knowledge for Nursing, West Virginia University SON and WV University Health Care and Sigma Theta Tau, Alpha Rho Chapter, in Morgantown, WV, on October 22, 2010.

**Leonardo, M., & Henry, R.** (2010). Paper Presentation: SimSarah Goes Home, sponsored by International Nursing Association for Clinical Simulation and Learning 9th Annual International Nursing Simulation/Learning Resource Centers Conference, in Las Vegas, NV, on June 16-19, 2010.

**Mayle, K., & Weideman, Y.** (2010). Refereed Presentation: A Senior-Level Service Learning Project Situated in a Meals-on-Wheels Program: Lessons Learned, sponsored by Exploring Social Justice for Vulnerable Populations: The Face of the Elderly, in Pittsburgh, PA, on September 23-24, 2010.

**Mayle, K., Smith, S., & Zoucha, R.** (2010). Refereed Paper Presentation: Using TCN Theories, Models and Approaches in Concert with the Synergy Model in Nursing Education, Transcultural Nursing on a Human Scale Conference sponsored by Transcultural Nursing Society, in Atlanta, GA, on October 20-24, 2010.

**Nickerson, C., & Resick, L.K.** (2010). Comparing student role perceptions: Traditional to community-based curriculum. *International Journal of Nursing Education Scholarship*, 7(1), Article 35, doi:10.2202/1548-923X.2018.

**Nickerson, C., Thurkettle, M.A., & Kanyongo, G.** (2010). Reflective Judgment and Evidence-Based Practice Readiness Across Educational Program Levels, sponsored by the National League for Nursing, \$7,807.

**Resick, L.K., & Leonardo, M.** (2010). Refereed Paper Presentation: The Duquesne University School of Nursing Nurse-Managed Wellness Center Model, sponsored by Duquesne University, in Pittsburgh, PA, on September 24, 2010.

# Dr. Rick Zoucha's CURE Grant-Funded Project Moves Into Phase II



Phase I of *Promoting Health and Health Care Access in the African Refugee Community: A Participatory Action Research Study* is under way in the School of Nursing, spearheaded by Principal Investigator Dr. Rick Zoucha. The research team also includes co-investigators Yinka Agana-Williams, Director of Acculturation for Justice, Access, and Peace Outreach (AJAPO); Mrs. Kathy Mayle-Towns; and Dr. Shirley Smith. Funded by the Pennsylvania Commonwealth Universal Research Enhancement

Program (Tobacco Settlement Act), the project will attempt to identify the health care needs of five African refugee groups within Pittsburgh and Allegheny County: Somali, Burundi, Sudanese, Liberian, and Zambian. The team identified a core group of representatives from each of these cultures and will convene a focus group to identify the health care needs within their individual communities.

Phase II of the project will begin this fall with a meeting at which the community leaders will invite 10 people

from their respective communities and again conduct focus groups representing each of the five cultures. Once these findings are presented to the core group, it will determine one common priority need. "Thus far, we've faced some challenges in getting everyone together in one place because the populations are so spread out through the area," said Zoucha. "Overcoming these cultural, language, and logistical challenges is just part of the research process for this type of study."

## Poster Presentation Receives First Place at MNRS Conference



Assistant Professor Elaine Hardy's poster presentation *Dimensions of Racial Identity as Predictors of Physical Activity* took first place in the PhD Graduate Student Poster Competition at the Midwest Nursing Research Society (MNRS) 2011 Annual Conference held in March in Columbus, OH. The poster presentation was based on her dissertation research of the same title. "As first-place winner, I was given

the opportunity to submit a manuscript, *Racial Identity and Physical Activity in Midlife African American Women*, to the *Western Journal of Nursing Research (WJNR)*," said Hardy. "The manuscript is currently under review."

### Faculty Scholarly Activities cont.

- Resick, L. K., & Richardson L.** (2010). Invited Presentation: Advanced Physical Assessment and Differential Diagnosis, sponsored by Autumn School Advanced Practice Nursing Graduates Faculty, at University College of Dublin School of Nursing, Midwifery & Health Systems, in Dublin, Ireland, on October 27, 2010.
- Resick, L.K., & Richardson L.** (2010). Invited Presentation: Nurse-Managed Wellness Centers and Community-Based Nursing Education, sponsored by Autumn School Advanced Practice Nursing Graduates Faculty, at University College of Dublin School of Nursing, Midwifery & Health Systems, in Dublin, Ireland, on October 27, 2010.
- Resick, L.K., & Richardson L.** (2010). Invited Presentation: Research and Development, Doctoral Studies, Case Studies; Round Table Discussion on Examination of Advanced Practice Nurse Role Nationally and Internationally and Explore its Potential in Relation to Patient Outcomes, Education, and Nursing Research, sponsored by Autumn School Advanced Practice Nursing Graduates Faculty, at University College of Dublin School of Nursing, Midwifery & Health Systems, in Dublin, Ireland, on October 27, 2010.
- Resick, L.** (2011). Collaborative Nurse Managed Wellness Center and UPMC Health Plan, Inc., sponsored by UPMC Health Plan, Inc., \$15,785 (9/1/10-8/31/12).
- Richardson, L.** (2010). Radiation exposure and diagnostic testing. *Journal of the American Academy of Nurse Practitioners*, 22(4), 178-185.
- Salman, K., & LaPorte, R.** (2010). The incidence rate of lower extremity amputation in Aman, Jordan. *Jordan Medical Journal*, 44(1), p 72-87.
- Salman, K., & Resick L.** (2010). Research Grant: The Meaning of Health Among Iraqi Refugee Women in the United States, sponsored by Sigma Theta Tau, Epsilon Chapter, \$2,000 (03/10-5/11).
- Salman, K., & Zoucha, R.** (2010). Considering faith within culture when caring for the terminally ill Muslim patient and family. *Journal of Hospice and Palliative Nursing*, 12(3), 156-163.
- Sekula, L.K.,** Bailey, D., & Stoffel, H. (2011). Invited Workshop Presentation: Forensics and the Nurse Practitioner in Practice, sponsored by National Nurse Practitioner Symposium, in Copper Mountain, CO, on July 16, 2011.
- Sekula, L.K., Colbert, A., & Necessary J.** (2010). Refereed Presentation: Variables in the Prosecution of Sexual Assault Cases, sponsored by International Association of Forensic Nurses, IAFN 18th Annual Scientific Assembly, in Pittsburgh, PA, on October 28, 2010.
- Sekula, L.K., & Colbert, A.** (2010). Forensic psychiatric nursing. In E. M. Varcarolis & M. J. Halter (Eds.). *Foundations of Psychiatric Mental Health Nursing, 6th ed.* (pp. 725-734). St. Louis, MO: Elsevier.
- Biddle, V.S., **Sekula, L.K., Zoucha, R., & Puskar, K.R.** (2010). Identification of suicide risk among rural youth: Implications for the use of HEADSS, *Journal of Pediatric Health Care*, 24(3), 152-167.
- Burgess, A.W., Narirney, C., & **Sekula, L.K.** (2010). Refereed Presentation: Infant and Fetal Abductions, sponsored by the International Association of Forensic Nurses, IAFN 18th Annual Scientific Assembly, in Pittsburgh, PA, on October 30, 2010.
- Shuster, M.H., Haines, T., **Sekula, L.K.,** Kern, J., & Vazquez, J.A. (2010). Reliability of intrabladder pressure measurement in intensive care. *American Journal of Critical Care*, 19(4), 29-39, doi:10.4037/ajcc2010204.
- Smith, S.** (2010). Refereed Poster Presentation: Participatory Action Research: Health Promotion Needs of Homeless Patrons of a Drop-In Center, sponsored by the Rita McGinley Symposium Exploring Social Justice for Vulnerable Populations: The Face of the Elderly, in Pittsburgh, PA, on September 23-24, 2010.
- Turk, M.W.,** Sereika, S.M., Yang, K., Hravnak, M., Ewing, L.J., & Burke, L.E. (2010). Refereed Poster Presentation: Use of Behavioral Strategies for Weight Maintenance, sponsored by State of the Science Congress on Nursing Research, in Washington, DC, on September 29, 2010.
- Turk, M.W.,** Sereika, S.M., Yang, K., Hravnak, M., Ewing, L.J., & Burke, L.E. (2010). Invited Post Presentation: Use of Behavioral Strategies for Weight Loss Maintenance, sponsored by NINR's 25th Anniversary Scientific Symposium, in Bethesda, MD, on September 30, 2010.
- Turk, M.W.,** Sereika, S.M., Yang, K., Hravnak, M., Ewing, L. J., & Burke, L.E. (2010). Published Abstract: Do dietary intake and physical activity mediate the relationship between psychosocial variables and weight loss maintenance? *Obesity*, 18(Suppl. 2), 113.
- Turk, M.W.,** Burke, L., & **Zoucha, R.** (2010). Exploring the Correlates and Experiences of Weight Loss Maintenance, sponsored by School of Nursing Faculty Development Fund, \$4,999 (07/10-07/11).

# Graduate Students' Scholarly Activities

## PHD STUDENTS

### CAROLYN CUTILLI

**Cutilli, C.C.** (2010). Patient education corner. Seeking health information: What sources do your patients use? *Orthopaedic Nursing*, 29(3), 214-219.

**Cutilli, C.C.**, & Schaefer, C.T. (2011). Health literacy assessment and practice. In V. Hirth, D. Wieland, & M. Dever-Bumba (Eds.), *Case-based geriatrics: A global approach* (pp. 137-153). New York: McGraw-Hill Medical.

### JEANETTE KATES

**Kates, J.** (2010). Presentation: APN/PharmD Collaborative Practice Model for Medically Isolated Older Adults, at the Gerontological Advanced Practice Nurses Association 29<sup>th</sup> Annual Conference, in Albuquerque, NM, on September 23-25, 2010.

Alesiani, R., Fleegler, E., & **Kates, J.** (2010). Recorded learning session: PharmD/NP Model of Home-Based Primary Care: The Impact on Hospital Recidivism. Care Transitions Learning Forum, on September 23, 2010.

**Kates, J.** (2011). Operationalizing the Concept of Quality of Life. Sixth Annual Conference of the New Jersey End-of-Life Nursing Education Consortium (NJ-ELNEC), in Somerset, NJ, on April 15, 2011.



### RACHEL JOSEPH

**Joseph, R.** (2011, July/August). *Tracheostomy in infants: Parent education for home care*, 30 (4), 231-242. doi:10.1891/0730-0832.30.4.231

### CINDY SCHAEFER

Cutilli, C.C., & **Schaefer, C.T.** (2011). Health literacy assessment and practice. In V. Hirth, D. Wieland, & M. Dever-Bumba (Eds.), *Case-based geriatrics: A global approach* (pp. 137-153). New York: McGraw-Hill Medical.

### SUSAN STROUSE

Bappert, K., & **Strouse, S.** (2010). Presentation: Use of Second Life (c) with On-Site and Distance Learners in a BSN Program at the American Association of Colleges of Nursing Baccalaureate Education Conference, on November 18-20, in Orlando, FL.

## DNP STUDENT

### MARY POLITO

**Polito, M.Z.**, Thompson, J.W.G., & Defina, P.A. (2010). A review of the International Brain Research Foundation novel approach to mild traumatic brain injury presented at the International Conference on Behavioral Health and Traumatic Brain Injury. *Journal of the American Academy of Nurse Practitioners*, 22(9), 504-509.

# Three Faculty Members Receive School of Nursing Faculty Research Grants



Dr. Becky Kronk

The School of Nursing Faculty Research Intramural Grant Program is offered to faculty through the Center for Nursing Research and was designed to help faculty advance their scholarly work, initiate work in a new direction, or continue in their program of research. Ideally, these grants will help faculty successfully obtain external support to continue their research.

This year, three projects were funded, each for \$5,000. Congratulations to the following faculty members!

- Dr. Becky Kronk, *Fragile X Syndrome*
- Dr. Denise Lucas, *Learned Resourcefulness in Working Women who are Poor and Uninsured*
- Dr. Linda Koharchik, *Evidence-based Initiative to Improve Influenza Immunization Participation Among Undergraduate Student Nurses*



Dr. Denise Lucas

When submitting an application, faculty members agree to complete the research project within one year and submit a manuscript to a peer-reviewed journal and a report to the Center for Nursing Research within six months of completing the project.

Funding is limited to \$5,000 per study, and no more than four grants are awarded each year. Grant applications are due at the beginning of April, and funds are released in early July.

Drs. Alison Colbert, Bonnie Dean and Michalene King served on this year's review committee, chaired by Dr. Linda Goodfellow.



Dr. Linda Koharchik

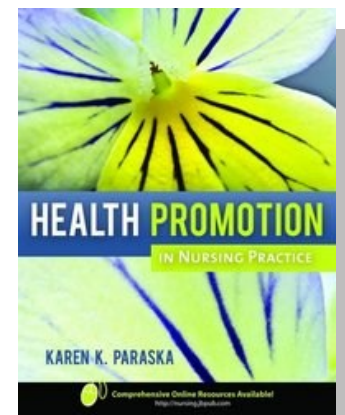
## Dr. Karen Paraska Publishes Book



Assistant Professor Dr. Karen Paraska's text book *Health Promotion in Nursing Practice* will be released in November, following several delays. Publisher Jones & Bartlett approached Paraska to write the book in 2009, so as the sole author she completed the work in a relatively short amount of time. *Health Promotion in Nursing Practice* provides

guidance on how to translate principles of health promotion into practice and research. Using the synergy model as a new framework for health promotion theory, the book discusses chronic diseases, program planning, and evaluation.

The text includes chapter objectives, summaries, articles, key terms, review questions, case studies and exercises to bring theory into practice. "Many texts cover various bits and pieces of information related to chronic illness and health promotion," said Paraska. "My goal was to compile all of the information I've gleaned from my years of practice and teaching in one book."



# Dr. Becky Kronk Attends NIH Summer Genetics Institute at NIH Campus

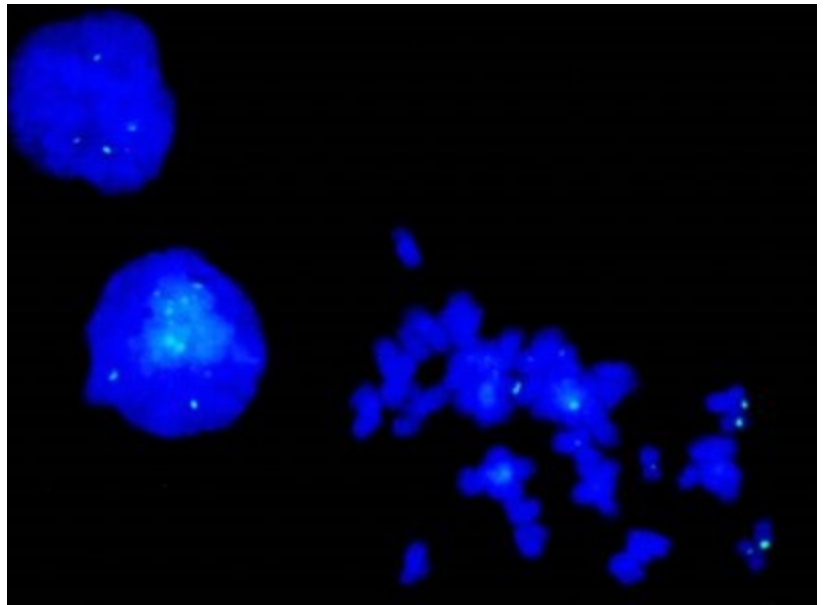
By Krista Ramsey

Dr. Becky Kronk, assistant professor, had the opportunity to attend the National Institute of Nursing Research (NINR) Summer Genetics Institute (SGI) held June 6-July 1 on the NIH campus in Bethesda, MD. The SGI is an intensive four-week, eight-credit hour (awarded by Johns Hopkins), graduate level program in genetics that includes both classroom and laboratory time. The class of 24 attendees consisting of faculty and post- and pre-doctoral students from schools of nursing around the country were selected from a pool of applicants. With a packed schedule, the group met Monday through Friday, sometimes until 6 or 7 pm, and sometimes on Saturday. In addition, they took a “field trip” to a DNA sequencing laboratory run by the NIH. “The speakers we heard were amazing—true experts in the field. It made me think that if these are the kind of people doing genetics research, we are in good hands,” said Kronk. “The hands-on experience with the DNA testing also was invaluable.”

Kronk feels that her extensive experience with Fragile X and other developmental disabilities and syndromes connected with genetics is what qualified

her for selection into the program. Goals of the SGI were to strengthen attendees’ overall knowledge of genetics and learn how to apply that in practice, integrate it into the nursing curriculum, and encourage nurses to foster research careers. “This was a life- and career-changing experience. The core of what I came away with is that the field and future of genetics is wide open,” said Kronk. “Something I read stated that in the 60s and 70s, genetics was a subdivision of medicine and, now, everything else is a subdivision of genetics. Everything I learned at this program confirmed this.”

The program is administered by the Foundation for Advanced Education in the Sciences (FAES) as one of the BioTrac programs and is sponsored by NINR tuition-free.



At the Summer Genetics Institute, Becky Kronk had the opportunity to work with karyotyping, which examines chromosomes in a sample of cells to help identify genetic problems as the cause of a disorder or disease and involves staining the nucleus of the cell with fluorescence. As a precursor to karyotyping, this photo shows results of fluorescent in situ hybridization (FISH) of K562 cells. The centromeres of chromosome 17 were fluoresced with green alpha satellite DNA probe. Cells are viewed in both interphase and metaphase. Metaphase shows lysed cells with chromosome spread.

# Congratulations to DUSON's Newest PhD and DNP Graduates!



## PHD PROGRAM

### FALL 2010

**Robert Eric Doerfler**

Clinical Trial of Cognitive-Behavioral Therapy to Reduce Antiretroviral Side Effects in HIV Patients

**Annette Marie Weiss**

Mothers Behind Bars: The Lived Experience

**Lynn Lunderman Wiles**

Basic Knowledge in Critical Care: A Comparison of Experienced and Newly Graduated Nurses Augmented with an Examination of Newly Graduated Nurses' Experience Making Clinical Judgments

## DNP PROGRAM

### SPRING 2011

**Robin Lynn Adams-Weber**

The Impact of Education Provided by a Health Care Practitioner on Chlamydia Screening and Incidence in Women Ages 18 to 25 in a County Health Clinic in Rural Appalachia

**Dany Jamil Badreddine**

The Development of a Baseline Evaluation of the Current Knowledge of Nurses About Patient Safety on Nurse Remote Area Chair (RAC), Saudi Arabia

**Dawn Elizabeth Bent**

Health Promotion Education for Guardians to Decrease Poor Eating Habits and Lack of Physical Activity in Lower Elementary School Students

**June Ruth Granger Borazjani**

Will a Simulated Learning Activity Facilitate the Development of Empathy in Nursing Students?

**Renee Cantwell**

Nursing as an Additional Language and Culture Program (NALC)

**Margaret Acker Chakan**

The Impact of a Clinical Experience with Women Who are Incarcerated on Sophomore Student Attitudes and Cultural Awareness

**Donna M. Gribbin**

The Impact of High-Fidelity Simulation on the Self-Confidence and Satisfaction of Undergraduate Nursing Students

### SPRING 2011

**Valera Alexandra Hascup**

Cultural Expressions, Meanings, Beliefs and Practices of Mexican American Women during the Post-Partum Period: An Ethnonursing Study

### SUMMER 2011

**Antonia Rae Torrey**

Development and Psychometric Evaluation of an Instrument to Assess the Treatment Fidelity of a Brief Opportunistic Intervention to Reduce Substance Use Among Pregnant Women

**Tami Lynn Jakubowski**

Nursing Students' Perceived Value of Learning to Coach High School Girls in Health Behavior Change

**Kelly Marie Jenkins**

Building the Foundation: Simulation Education and Student Nurses' Perceptions of Clinical Decision-Making Skills

**Karen Marie Marzlin**

A Competency Program to Improve Cardiac Monitoring Practice by Engaging Nurses to Link Evidence to the Point of Care

**Linda Scarci Morrow**

An Evaluation of the Impact of Computerized Bedside Medication Verification on Medication Administration Errors

**Karen Mae Myers**

The Educational Effectiveness of Using Student-Centered Teaching Modalities with Associate Degree Nursing Students

**Mary Zemyan Polito**

The Effects of Diabetes Education on Patient Follow-Up Eye Examination and Treatment Rates for Diabetic Retinopathy Among Community-Based Adults with Diabetes

**Bonnie Bevan Price**

Lead the Design of a Comprehensive Forensic Curriculum for the Entry-Level Forensic Nurse

**Lori Lyn Profota**

The Implementation of Communication Guidelines and Microsoft® SharePoint: A Quality Improvement Project for Nursing Shared Guidance

### Faculty Scholarly Activities cont.

Choo, J., Elci, O.U., Yang, K., **Turk, M.W.**, Styn, M.A., et al. (2010). Longitudinal relationship between physical activity and cardiometabolic factors in overweight and obese adults. *European Journal of Applied Physiology*, 108(2), 329-336, doi:10.1007/s00421-009-1203-6.

**Wilt, K., & King, M.** (2010). Refereed Paper Presentation: Time Well Spent: Integrating Simulation into an Accelerated One-Year BSN Program, sponsored by the 9th Annual International Nursing Simulation/Learning Resource Centers Conference, in Las Vegas, NV, on June 17-19, 2010.

**Zoucha, R.** (2010). Refereed Paper Presentation: The Meaning of Confianza (Confidence) in the Context of Health for Mexicans in an Urban Community: A Focused Ethnography, sponsored by the Eastern Nursing Research Society, Celebrating Diversity in Nursing Science, in Providence, RI, on March 24-26, 2010. (*not listed in last issue*)

**Zoucha, R.** (2010). Invited Presentation: Getting Beyond What We Think We Know: Teaching-Learning Strategies for Educating Nursing Students and Faculty, sponsored by the Connell School of Nursing, Boston College, on April 14, 2010, in Boston, MA. (*not listed in last issue*)

**Zoucha, R.** (2010). Invited Keynote Presentation: Culture, Care and Nursing: Reflections and Thoughts on the Profession, sponsored by Nurses Week at the Center for Addictions and Mental Health for Nursing Staff, in Toronto, Canada, on May 13, 2010.

**Zoucha, R.** (2010). Invited Presentation: Taking on the World—Online Teaching and Learning for a PhD in Nursing Program, sponsored by the University of Tennessee, in Knoxville, TN, on August 12, 2010.

**Zoucha, R.** (2010). Invited Keynote Presentation: The Process of Cultural Competence: Implications for Nursing Care, sponsored by the 3rd Annual Research Day, Somerset Medical Center, in Somerville, NJ, on November 30, 2010.

**Zoucha, R.** (2010). Model for Multicultural Understanding (Locke). In M. K. Douglas & D. F. Pacquiao (Eds.). *Journal of Transcultural Nursing: Core Curriculum for Transcultural Nursing and Health Care*, 21(Suppl. 1) (pp. 80S-82S). Thousand Oaks, CA: Sage.

Vogler, J., Altmann, T., & **Zoucha, R.** (2010). Native Hawaiian attitudes of culturally sensitive healthcare provider traits and behaviors. *Journal of Cultural Diversity*, 17(3) 90-98.

**Zoucha, R., Sekula, L.K., & Goodfellow, L.** (2011). Refereed Poster Presentation: Restructuring the PhD Curriculum for the Future Nurse Scientist at Doctoral Conference: Innovations and Challenges in Doctoral Nursing Education, sponsored by American Association of Colleges of Nursing (AACN), in San Diego, CA, on January 26-29, 2011.

Smith Glasgow, M.E., & **Zoucha, R.** (2011). Role strain in the doctorally prepared advanced practice nurse: The experiences of doctor of nursing practice graduates in their current professional positions. In H. M. Dreber & M. E. Smith Glasgow (Eds.). *Role Development for Doctoral Advanced Nursing Practice* (pp. 213-226). New York, NY: Springer.

**Zungolo, E.** (2011). Reflective response to career development strategies to support nurses engaged in doctoral advanced nursing practice: Understanding and mining opportunities. In H. M. Dreber & M. E. Smith Glasgow (Eds.). *Role Development for Doctoral Advanced Nursing Practice* (pp. 157-160). New York, NY: Springer.

**Phd and DNP Graduates cont.**

**Janet Lea Russell** (degree awarded posthumously)  
Assessing the Need for a Nurse-Managed Primary Health  
Care Clinic within a Domestic Violence Shelter

**Margaret Catherine Teu**  
Safe in the City: The Impact of a Sexually Transmitted  
Disease Prevention Video on Prevention Knowledge in  
African-American Men and Women Ages 18 to 30

**Cynthia Louise Webner**  
Improving Outcomes in the Out-of-Hospital Cardiac  
Arrest Patient: A Clinical Nurse Specialist-Led Evidence-  
Based Initiative

**Megan Elizabeth Wilson**  
Impact of Lower Extremity Deep Vein Thrombosis Risk and  
Prevention Education in an Agricultural Community

**The CNR Newsletter**

*Editor*

Linda M. Goodfellow, PhD, RN

*Author/Editor*

Krista Ramsey

*Designer*

Karen A. Kmetz