

Instructions

Follow these instructions in the order they appear on the page. The inability to follow the directions as they stand could lead to the user being unable to complete the wireless setup.

Step 1

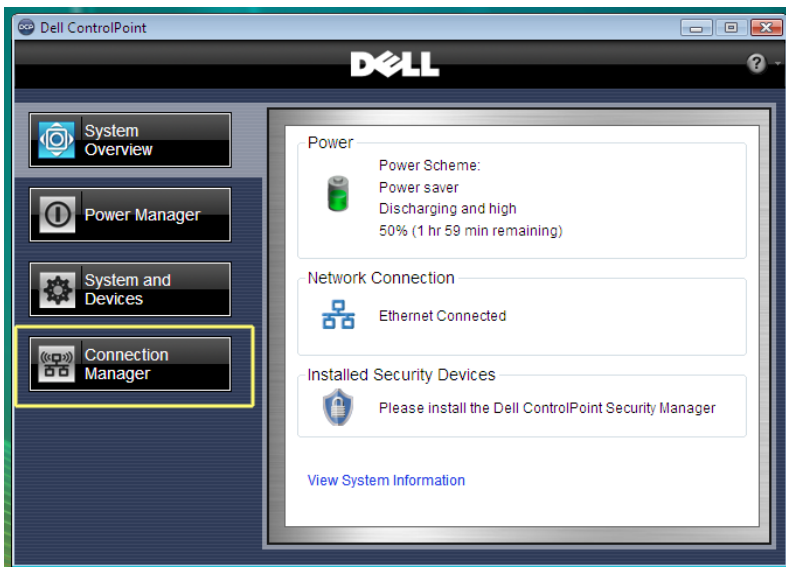
Locate and double click on the Dell Control Point Software in the lower right hand of the screen located near the clock.



If you do not see it located there choose it from the start menu.

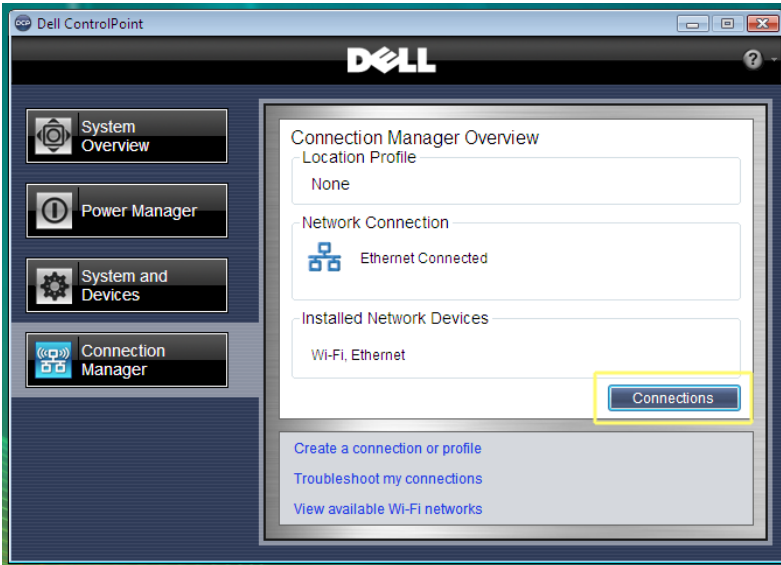
Step 2

Choose “Connection Manager” from the navigation on the left of the box.



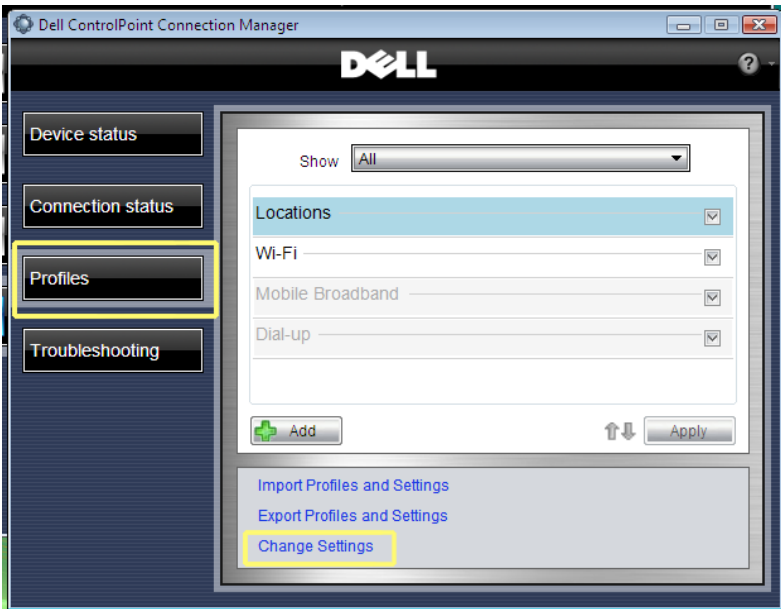
Step 3

Choose “Connections” from inside the Connection Manager Window.



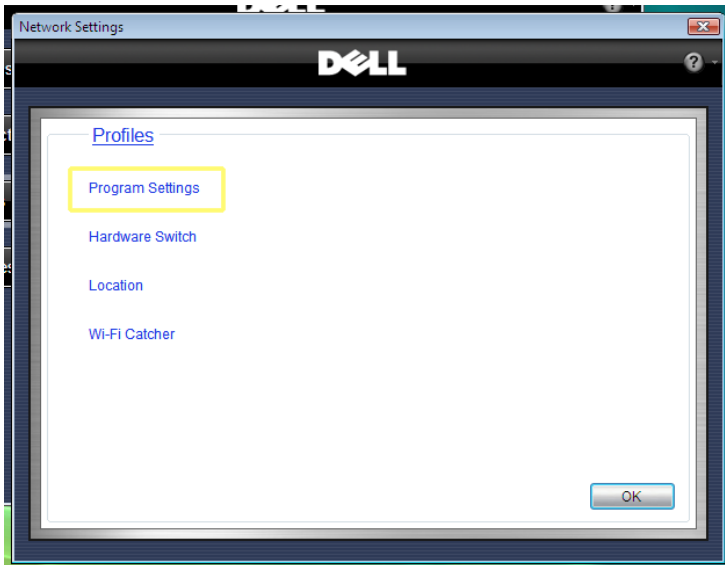
Step 4

Make sure “Profiles” is selected in the left hand navigation and click on “Change Settings”.



Step 5

Choose “Program Settings” from inside the Network Settings Window.



Step 6

Uncheck the box that says “Wifi”. Then click OK!

