

Prior to configuring your machine for DuqNet wireless you need to initialize your MultiPass account (credentials that you will be using for wireless). To do so, visit <http://www.duq.edu/multipass> and click the link for Initialize Your MultiPass. Once you've followed the on-screen prompts and have initialized your account you can proceed with the following instructions. Keep in mind that you will use this password that you've just created to setup your wireless connection.

Review **Duquesne's Wireless Airspace Policy**

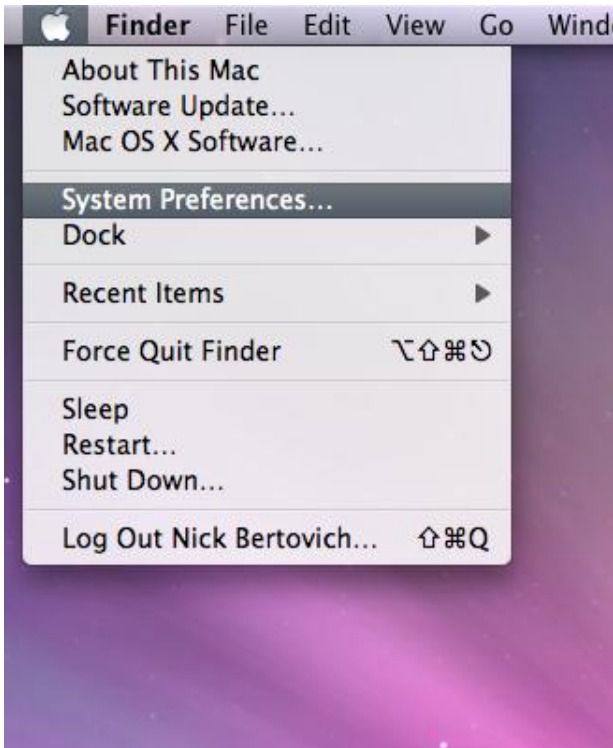
http://www.sites.duq.edu/cts/policies/policy_duqnet_wireless.shtml

These instructions are specific to the most recent release of Mac OS X, 10.5. To see which version of OS X you are running, click on the Apple menu in the top-left corner of the screen, and select "About this Mac..."

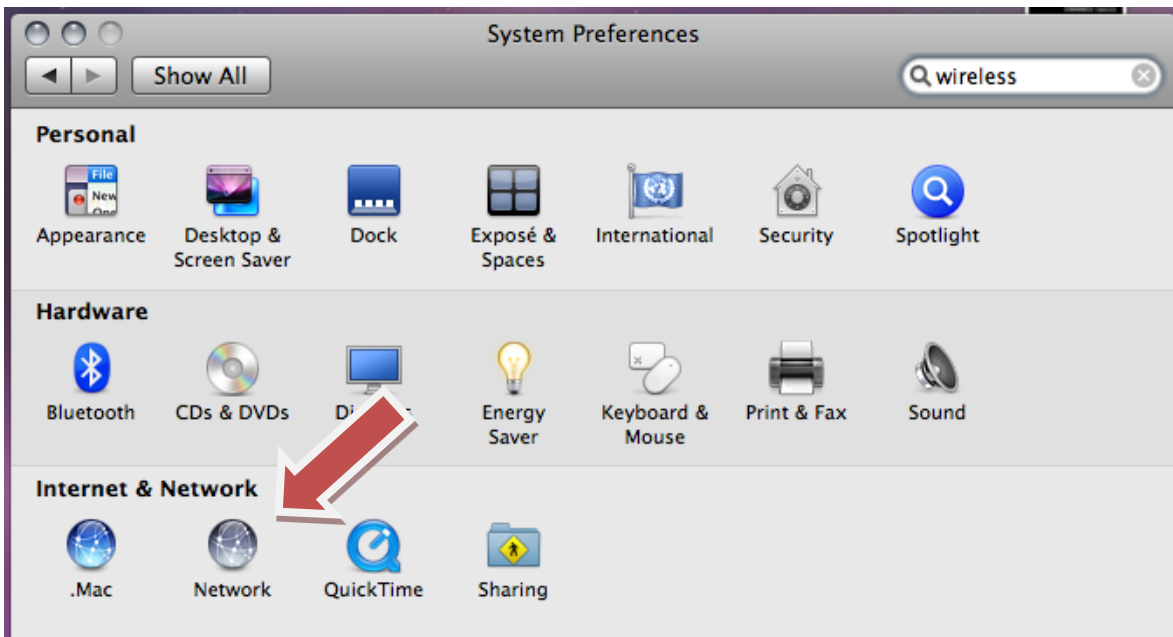


The version number will appear in the dialogue box, as shown in the previous image.

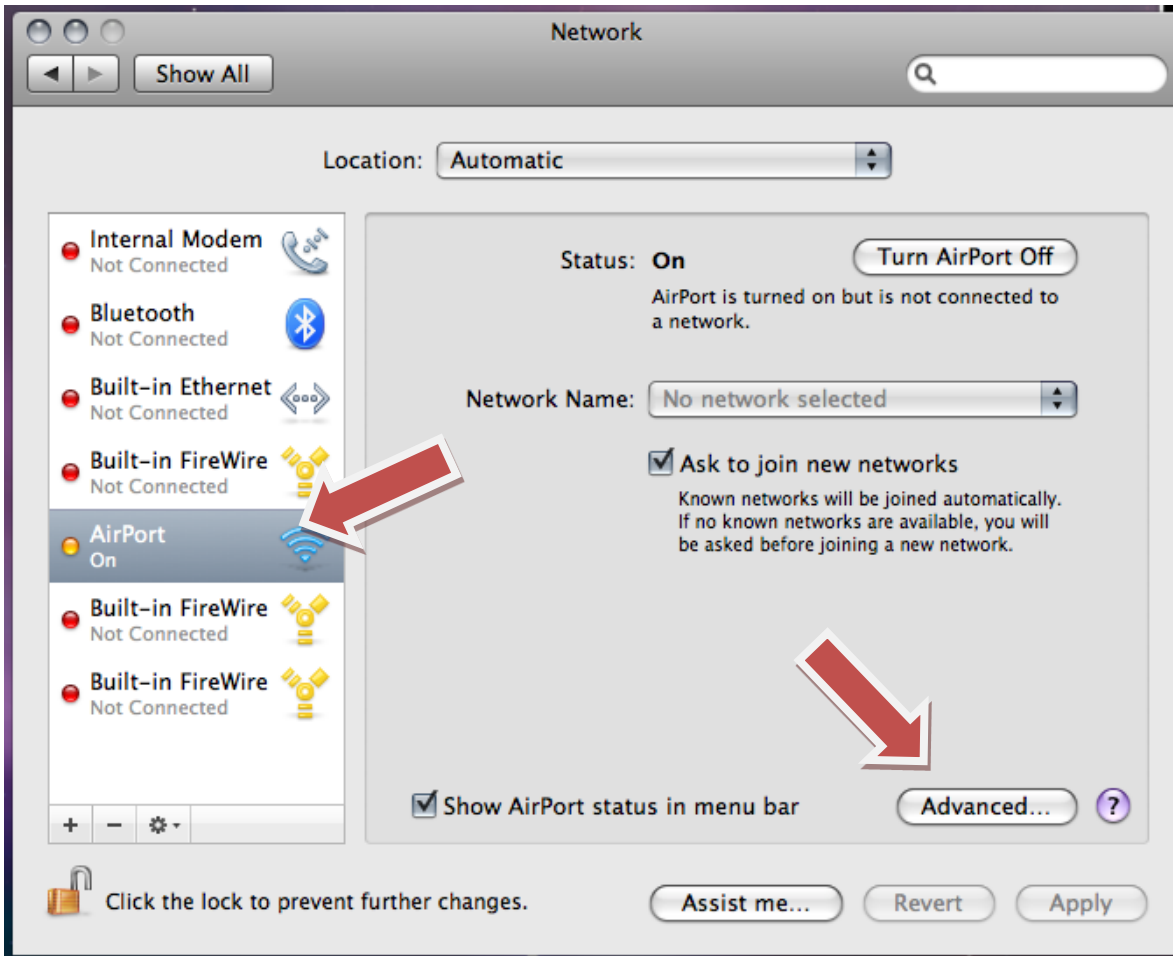
1. To access your Mac's network settings, first select the Apple menu, and then click "System Preferences..."



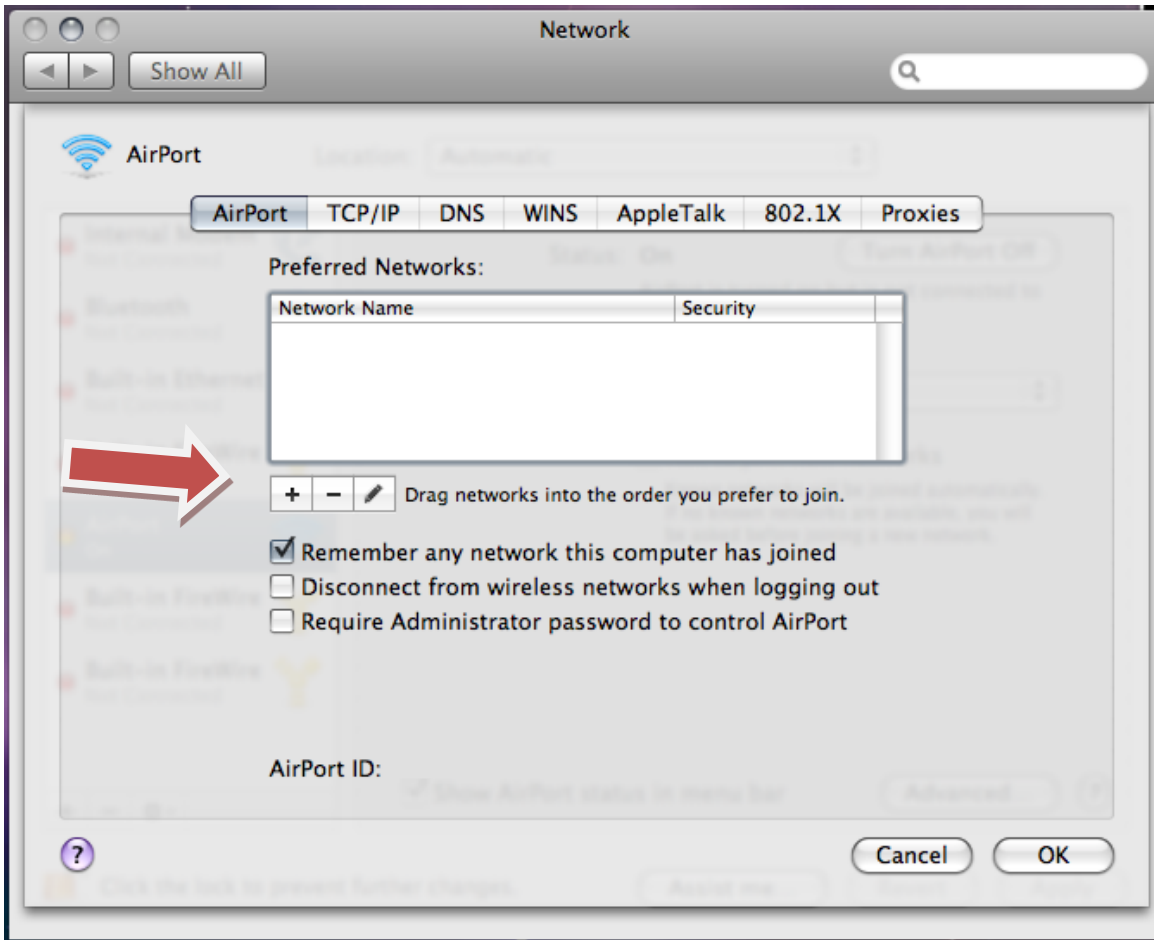
2. The System Preferences window will open. Click on the "Network" option. By default, this will be the second icon on the third row.



3. The Network preferences pane will display. Locate your Airport in the left-hand column and make sure that it is turned on. Then click the “Advanced...” button.



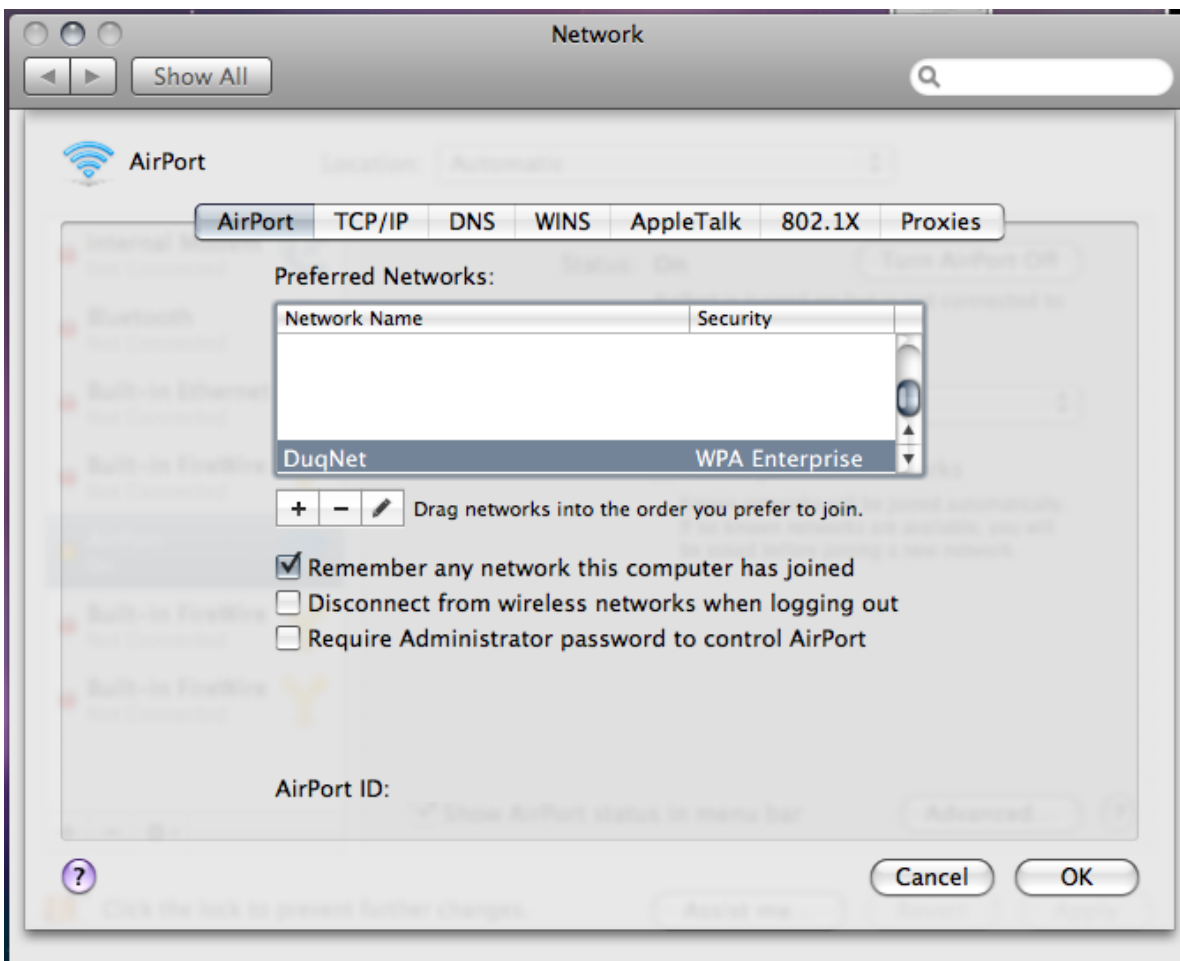
- Under the Advanced pane, make sure that the “AirPort” tab is selected. You may currently have some wireless networks listed in the “Preferred Networks” box. Click on the “+” button below the Preferred Networks box.



- A new window will open. Enter the following information into the appropriate fields. The Network Name is “DuqNet,” Security must be “WPA2 Enterprise,” User Name is your Multipass username, Password is your Multipass password, and 802.1X is “Automatic.” Once you’ve filled out all of this information, click “Add”



6. You will be returned to the Airport preferences pane. DuqNet should be listed in your box of Preferred Networks, as shown below. Click "OK."



7. You can then click Apply Now. Your laptop will attempt to connect to DuqNet (assuming you are within one of the areas with coverage). You will most likely receive a warning about the certificate, shown below. This is normal. Click "Continue" and in a few seconds you should be connected to the Internet via DuqNet wireless.

