

Software

Your computer must have Macintosh OS 10.4.2 or later in order to connect to the Duquesne wireless network, as WPA2 encryption is not supported fully in earlier versions of the Macintosh Operating System. Also, you must download or have installed the latest AirPort software. If you are unsure of the version of your AirPort card please run Software Update to guarantee the latest software. If your computer does not meet these requirements, you will not be able to connect to Duquesne's wireless network.

Hardware

The Duquesne wireless network requires WPA2 encryption, which is not supported by older AirPort cards. Only the newer AirPort Extreme cards are WPA2 compliant.

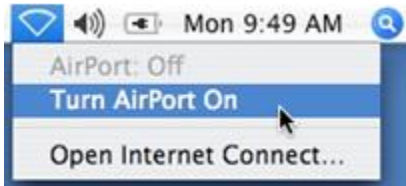
Note: To check the type of card you have installed, click on the Apple in the leftmost part of the menu bar and navigate to "About this Mac". A dialog box should appear with the current OS and memory information. Click on the "More Info..." button to display the Apple System Profiler. In the contents pane there will be a selection for AirPort Card, select it and it will display the current card version.

Prior to configuring your machine for DuqNet wireless you need to initialize your MultiPass account (credentials that you will be using for wireless). To do so, visit <https://ra.cr.duq.edu/AccountTools/multipass/initialize/> and click the link for Initialize MultiPass Account Once you've followed the on-screen prompts and have initialized your account you can proceed with the following instructions. Keep in mind that you will use this password that you've just created to setup your wireless connection.

Review **Duquesne's Wireless Airspace Policy**

www.technology.duq.edu/wirelesspolicy

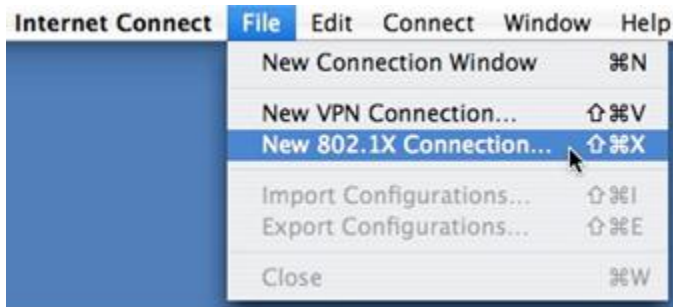
1. Check to make sure that your AirPort card is selected and receiving signal. It should appear in the menu bar at the upper right. If your airport does not display wavy lines and instead is a solid pie shape then click on the icon and dropdown box will appear with an option to Turn AirPort On.



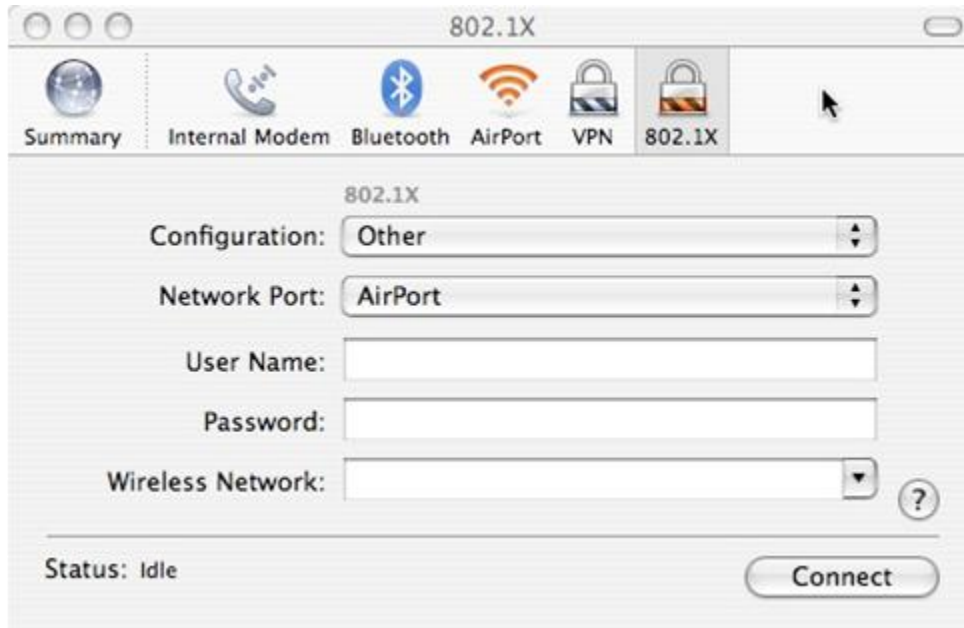
2. With your AirPort card on, select the Open Internet Connect... Another dialog box should appear with the AirPort icon selected and will display connection information.



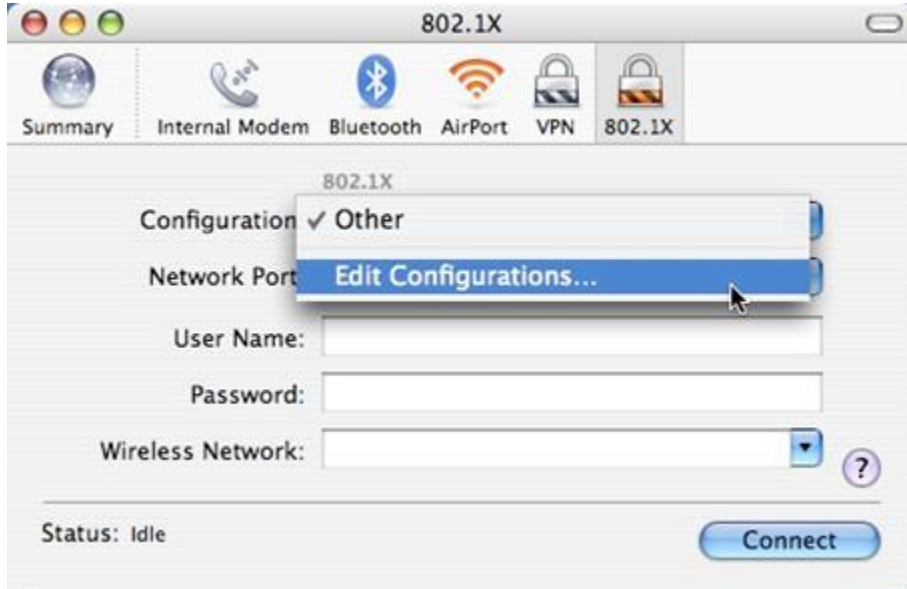
3. Add the 802.1X connection to your Internet Connect dialog box. Under File in the menu bar select "New 802.1X Connection". This will enable the 802.1X client to install on the machine.



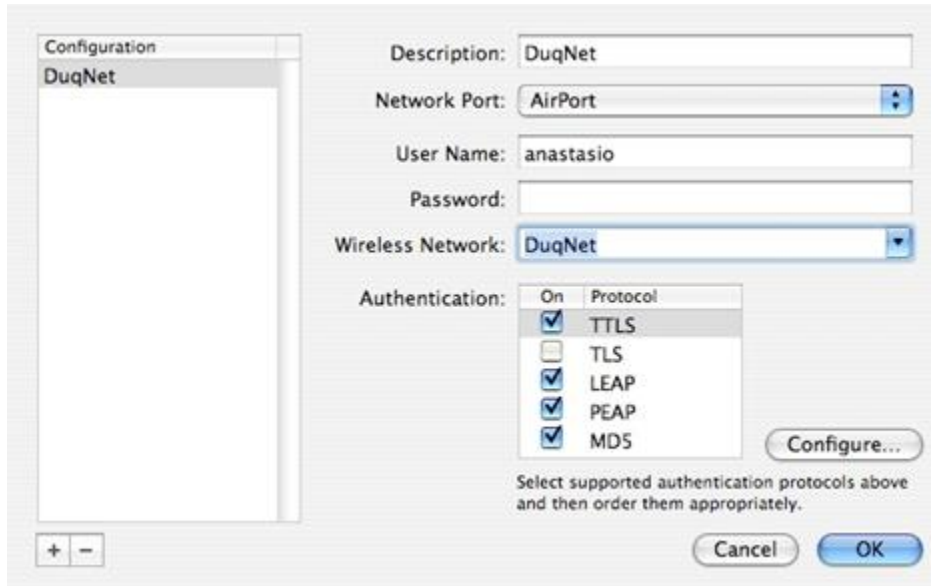
- After you select to add the 802.1X connection an icon will appear in the Internet Connect dialog box. Nothing should be configured and your screen should look something like this



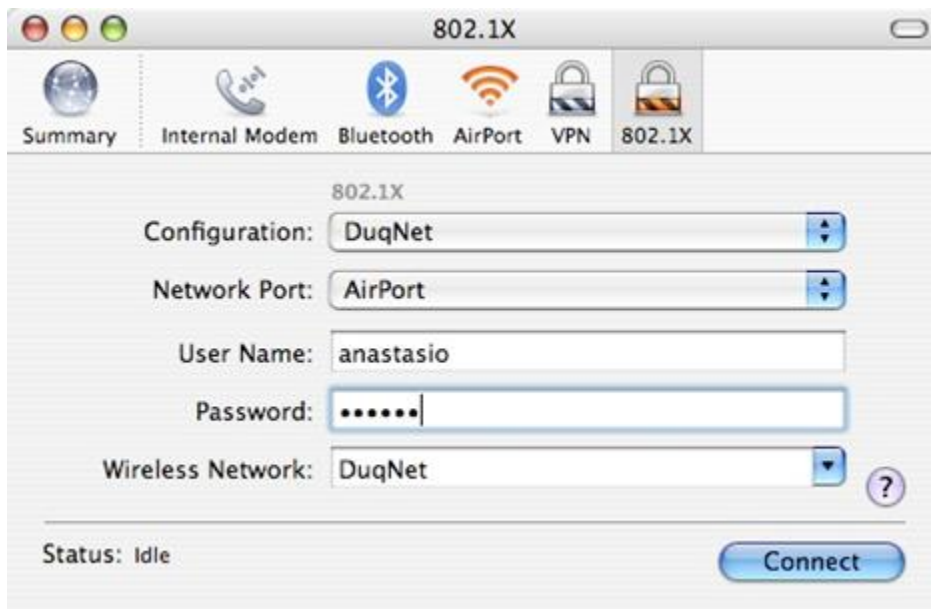
- In the configuration drop menu, select the Edit Configurations... option to create an 802.1X profile.



- A new dialog box should appear on top. Within that screen you will need to fill out the required information. Your username and password is your MultiPass. Make sure to select the Wireless network from the drop down. Your profile should look similar to the screen depicted below. When you are finished click OK.

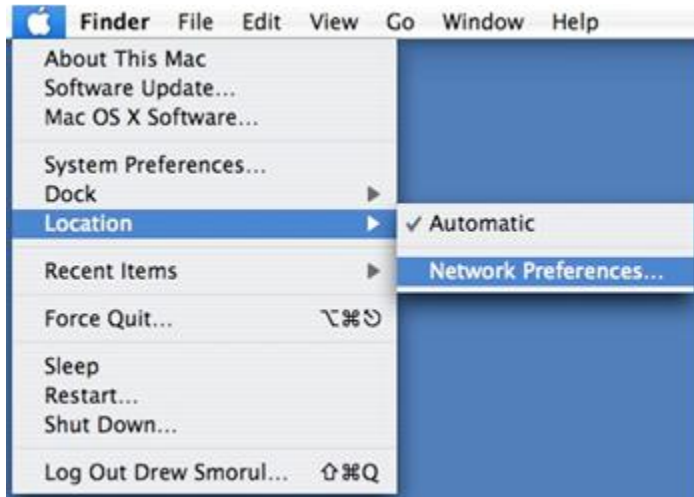


- After completing the configuration you now have added a profile for your 802.1X connection. Your screen should be similar to the one pictured below

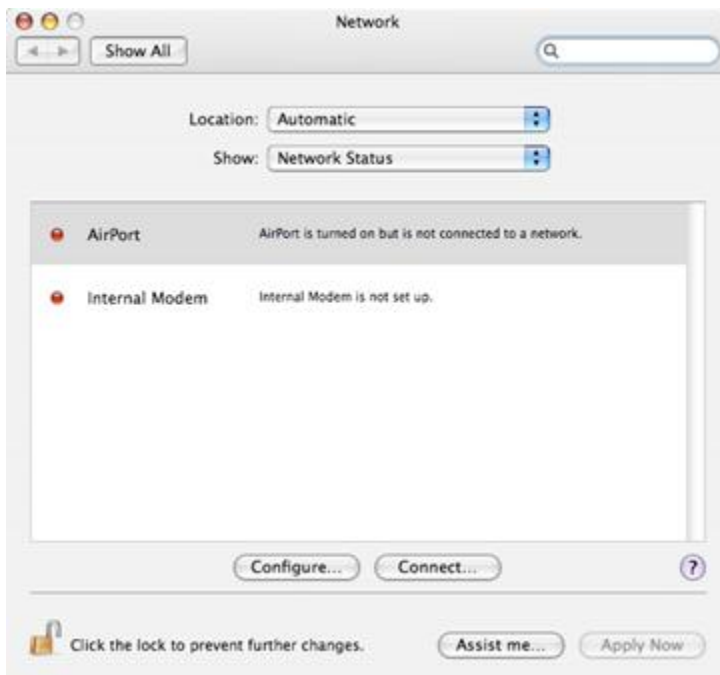


- After you have correctly configured your 802.1X configuration you must quit Internet Connect by selecting Internet Connect in the menu bar and choosing Quit.

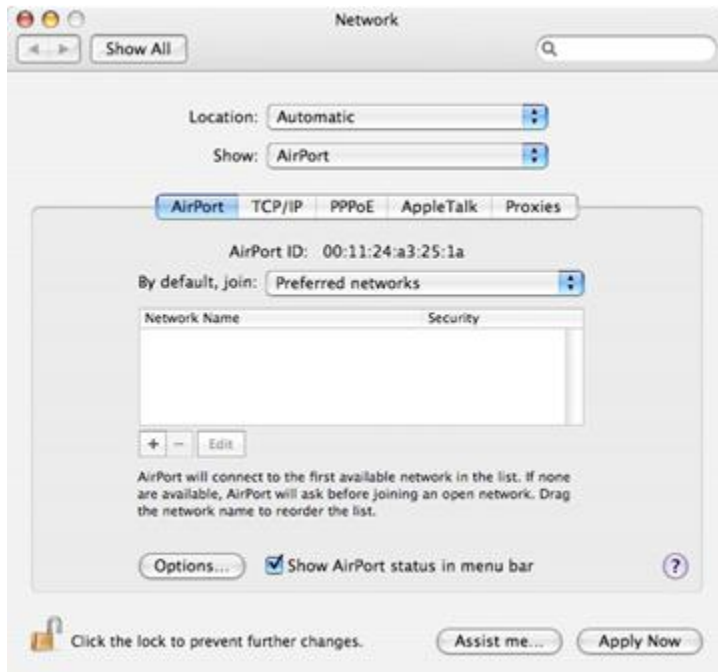
9. After quitting Internet Connect to allow your Apple to connect automatically you must first select the Apple menu, move your cursor to Location and select Network Preferences



10. After you select the Network Preferences a new dialog box should appear. This box displays the network configuration for all network adapters on the box.



11. Double-click Airport and the dialog box should change to display the Airport configuration options. Your Airport ID should be displayed as well as a drop down box. Make sure the drop down is selected to “Preferred networks” instead of automatic. Select the + sign to all the 802.1X configuration to your location manager



12. After you have selected the plus sign a new dialog box appears. Fill out the information as pictured below replace the username and password with your MultiPass username/password.



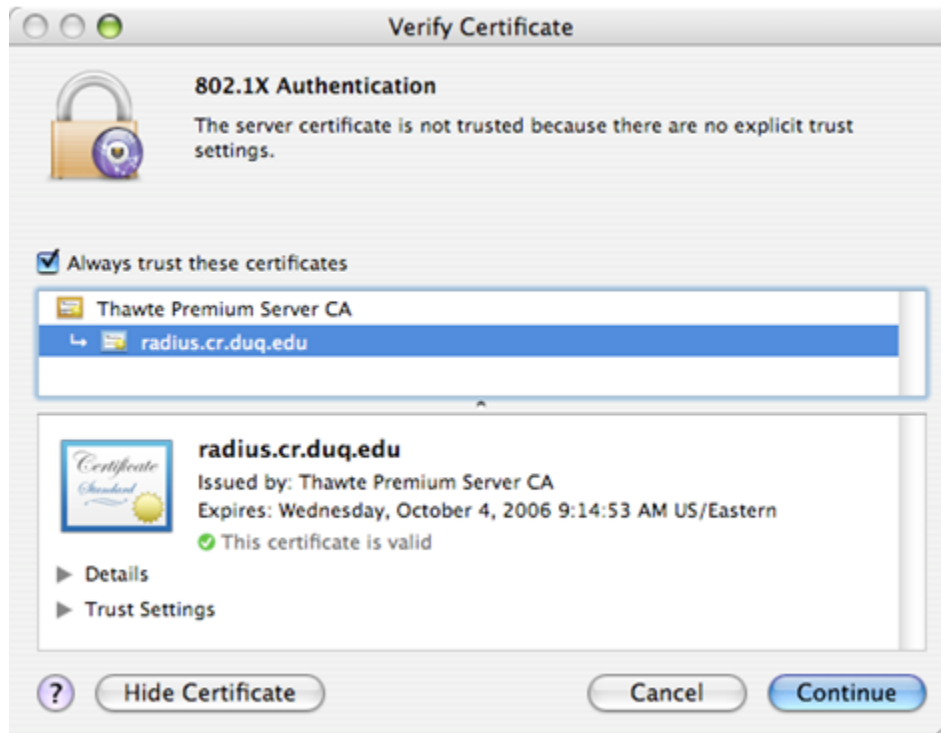
13. After you fill out the required fields press OK. You should now have a new configuration named DuqNet that you created. Press the “Apply Now” button to add the configuration and quit the Location Manager



14. You will be prompted when you connect to verify the authentication certificate please press Show Certificate to set the certificate trust settings.



15. The dialog box will expand and the certificate trust setting will display. Please check the “Always trust these certificates” check box so you will not get the Verify Certificate box anymore.



The AirPort connection menu will now automatically connect you to the DuqNet wireless network. After setting up the connection initially, you will automatically reconnect to this wireless network whenever it is in range, unless you change your password or erase the 802.1X profile.