

Prior to configuring your machine for DuqNet wireless you need to initialize your MultiPass account (credentials that you will be using for wireless). To do so, visit [www.duq.edu/multipass](http://www.duq.edu/multipass) and click the link for Initialize MultiPass Account. Once you've followed the on-screen prompts and have initialized your account you can proceed with the following instructions. Keep in mind that you will use this password that you've just created to setup your wireless connection.

Review the **Duquesne Wireless Airspace Policy**:

[http://www.sites.duq.edu/cts/policies/policy\\_duqnet\\_wireless.shtml](http://www.sites.duq.edu/cts/policies/policy_duqnet_wireless.shtml)

This packet is used for connecting your Windows Vista or Windows 7 computer to the DuqNet wireless network.

1. Go to Start (or the windows icon in the lower left hand corner)
2. Click Control Panel
3. Click on Network and Internet



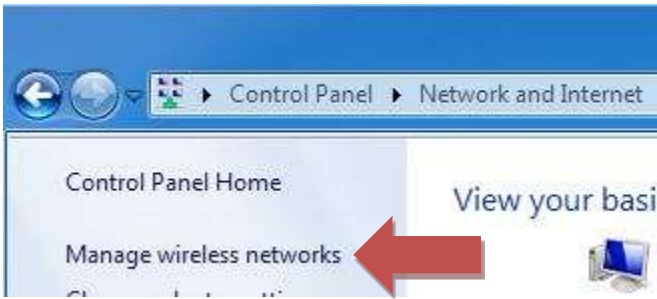
4. Click on Network and Sharing Center



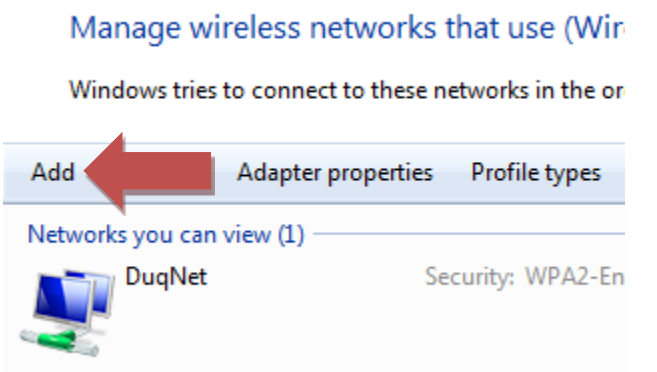
This document can be found on [www.duq.edu/duqnet](http://www.duq.edu/duqnet)

Updated on 3/6/2011

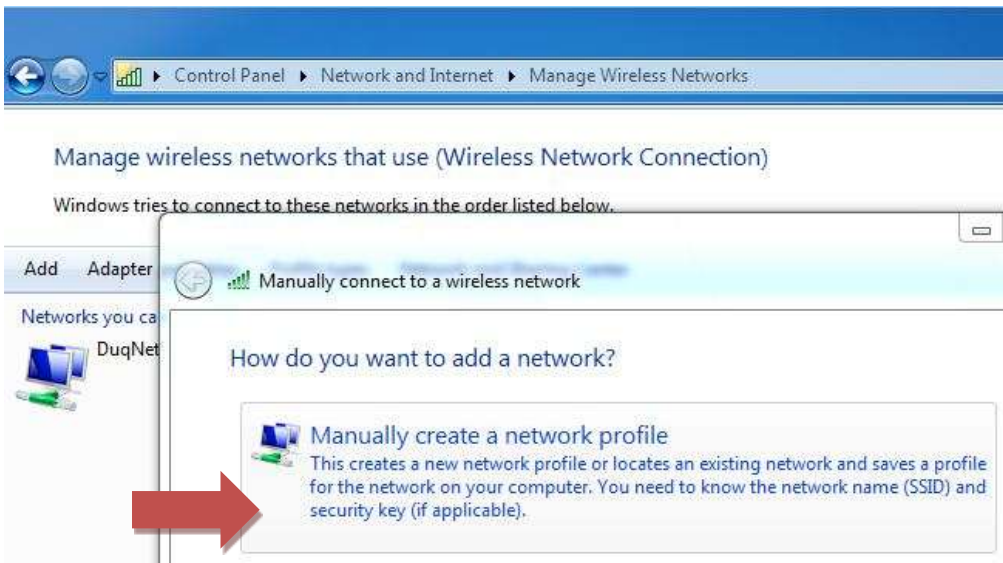
5. Click on Manage Wireless Networks (left hand side)



6. If you have already added DuqNet remove it from the list by selecting it and clicking on "Remove"



7. Click Add
8. Choose Manually Create a Network Profile

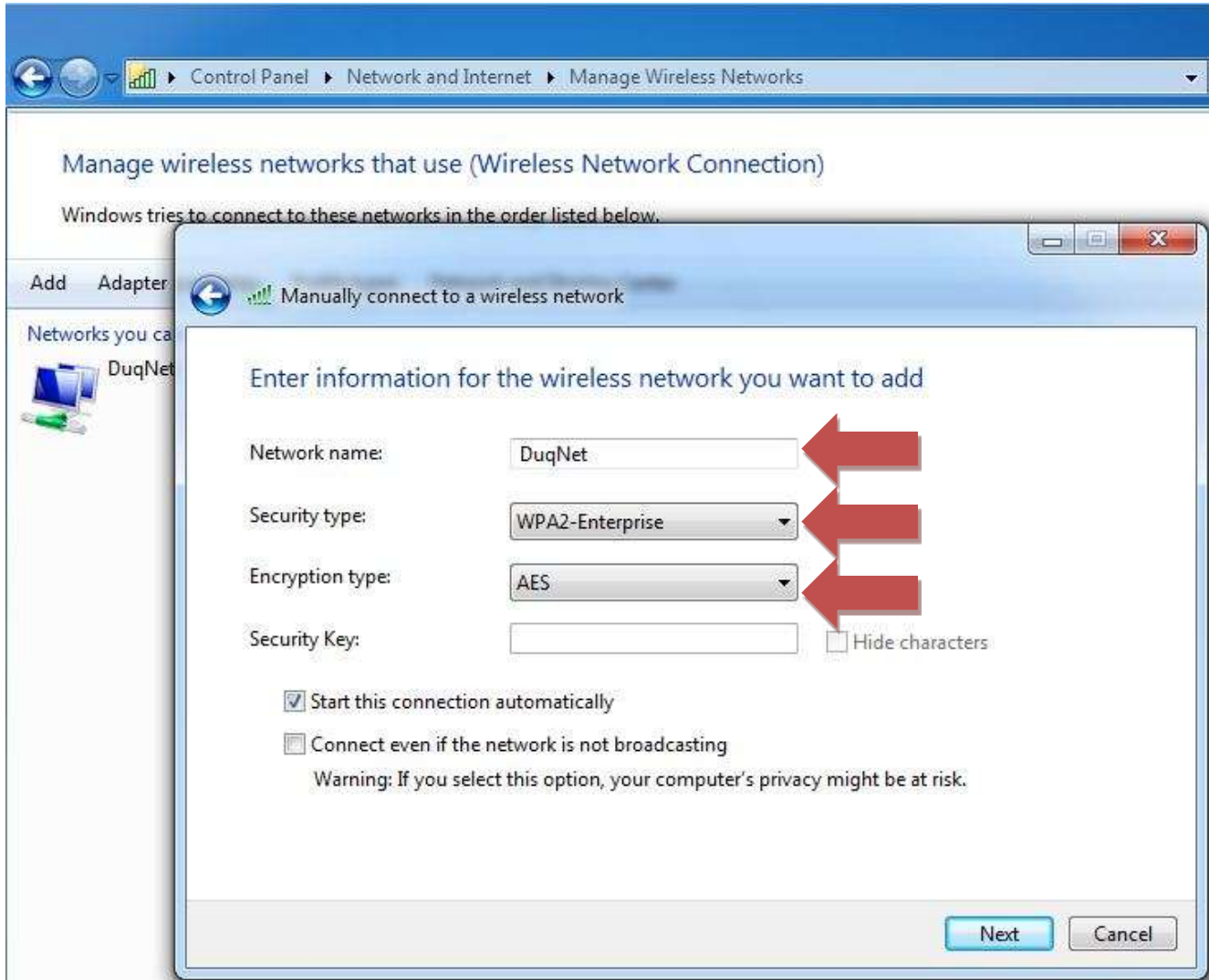


9. Enter the information as follows  
Network Name: DuqNet  
Security type: WPA2 – Enterprise

This document can be found on [www.duq.edu/duqnet](http://www.duq.edu/duqnet)

Updated on 3/6/2011

Encryption: AES



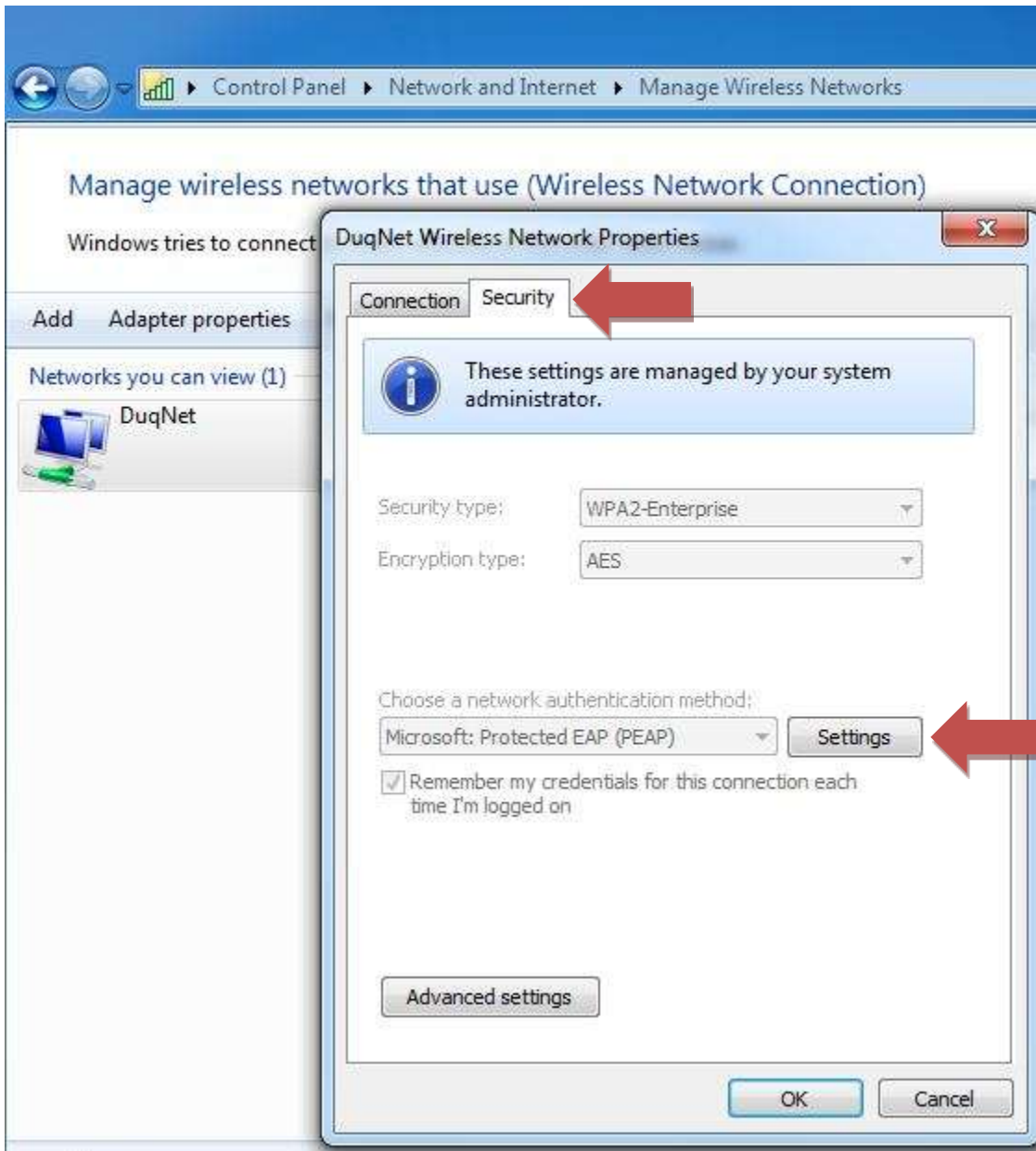
10. Click Next, Then close

11. Back on the manage wireless networks screen...

12. Right click DuqNet

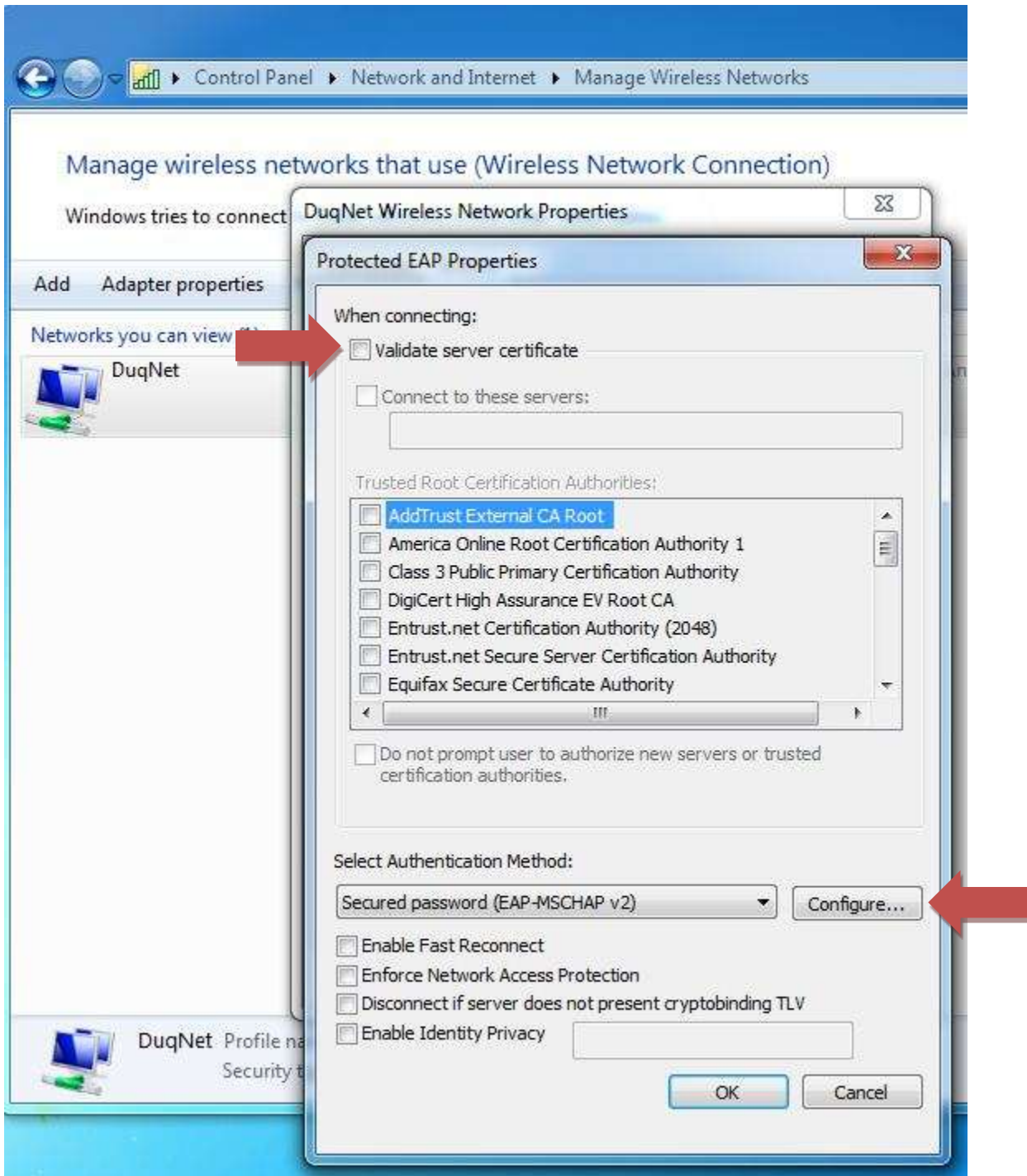
13. Go to Properties

14. Security tab

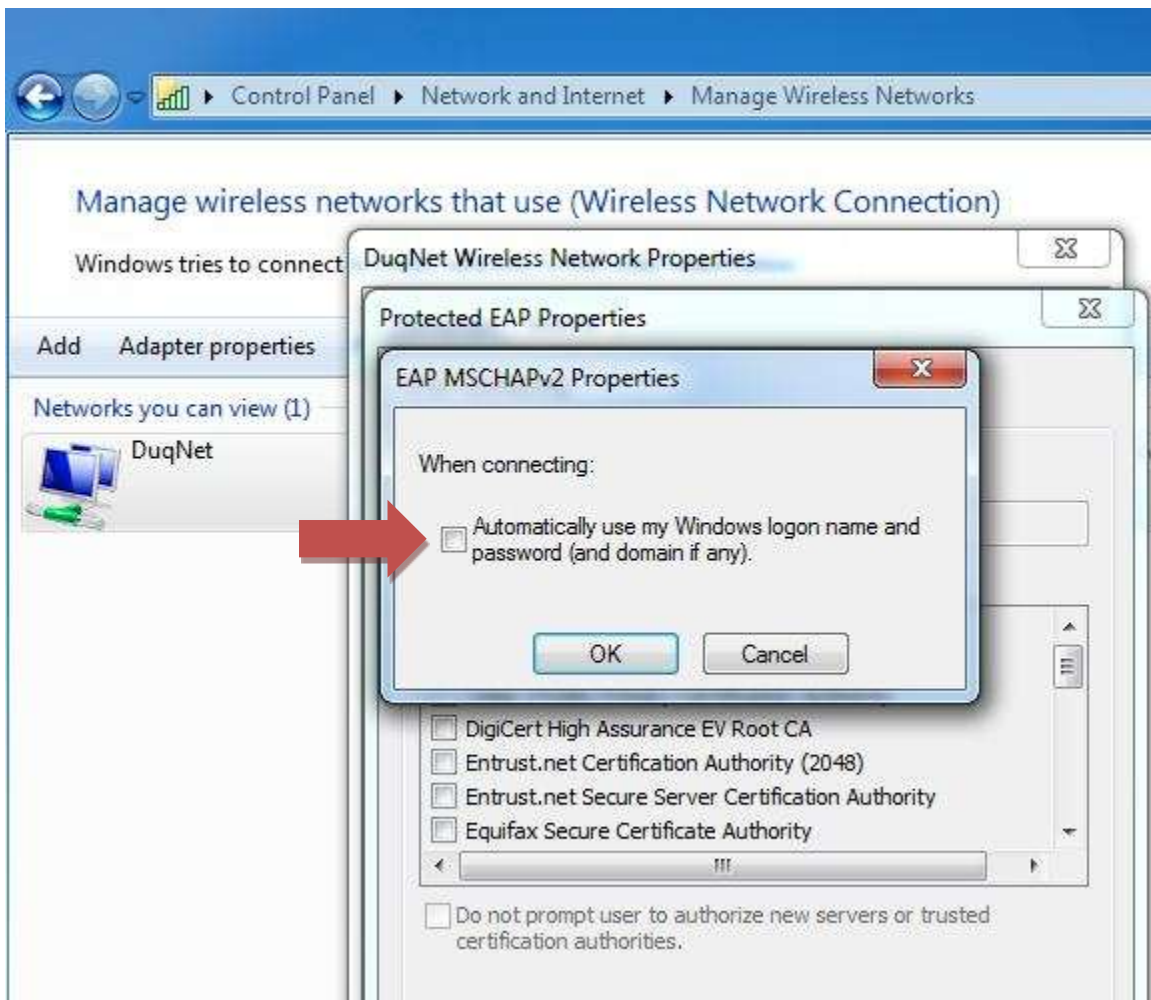


15. Click on Settings

Uncheck Validate server certificate



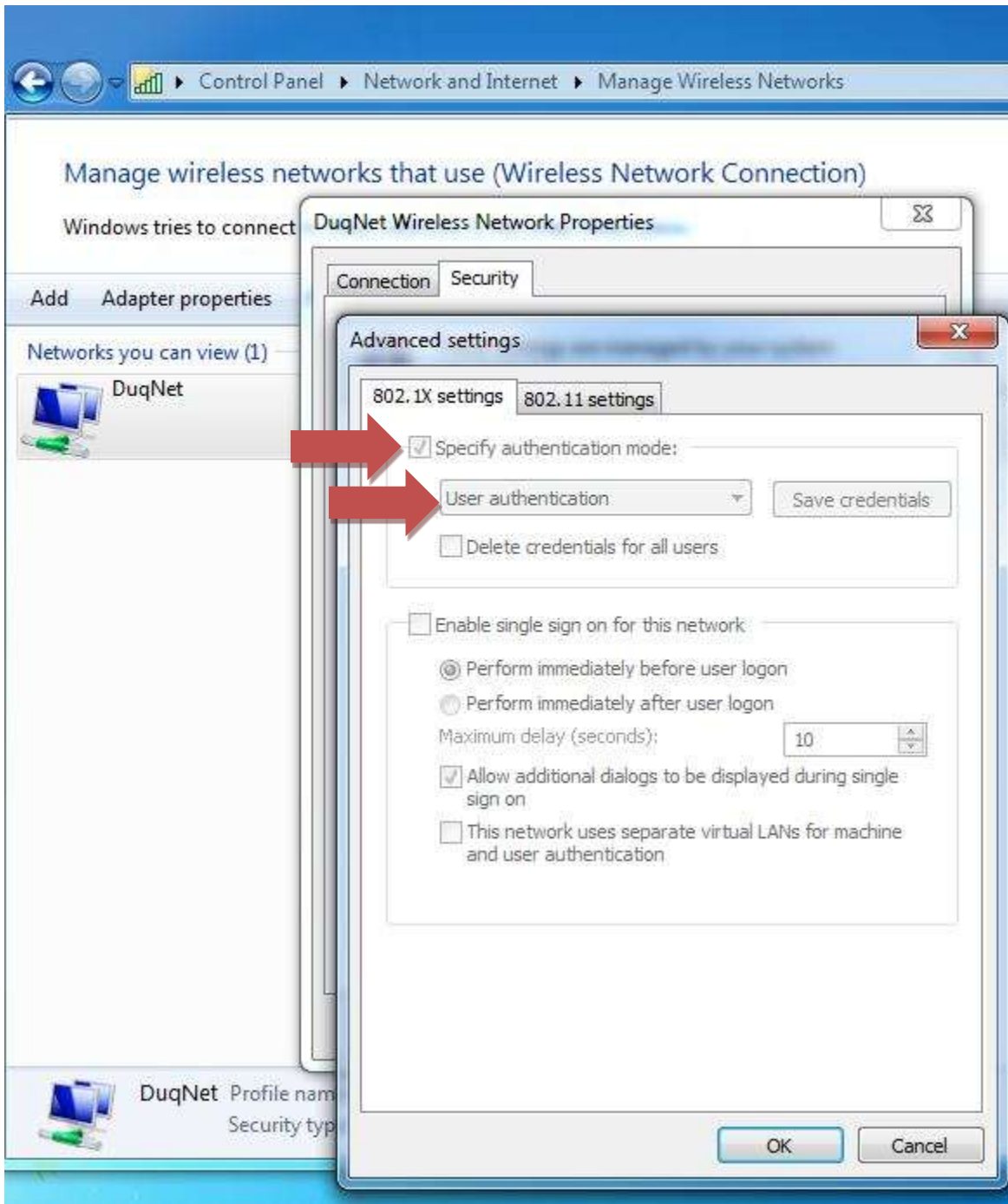
16. Click Configure and Uncheck Automatically use my Windows log in name



17. Click OK

#### If running Windows 7

18. Go back to the Security Tab option
19. Under Advanced Settings
20. Check Specify Authentication mode
21. Choose User Authentication



22. Click OK

23. Double click wireless icon by the time. (5 bars)

24. Enter your multipass username/password

25. You should be connected!

If not please contact the CTS Help Desk at 412-396-4357 for assistance.

This document can be found on [www.duq.edu/duqnet](http://www.duq.edu/duqnet)

Updated on 3/6/2011