

Operating System Details:

-Microsoft Windows XP with SP2

-WindowsXP-KB893357-v2-x86-ENU.exe must be installed to support WPA2

Prior to configuring your machine for DuqNet wireless you need to initialize your MultiPass account (credentials that you will be using for wireless). To do so, visit www.duq.edu/multipass and click the link for Initialize MultiPass Account. Once you've followed the on-screen prompts and have initialized your account you can proceed with the following instructions. Keep in mind that you will use this password that you've just created to setup your wireless connection.

Review the **Duquesne Wireless Airspace Policy**:

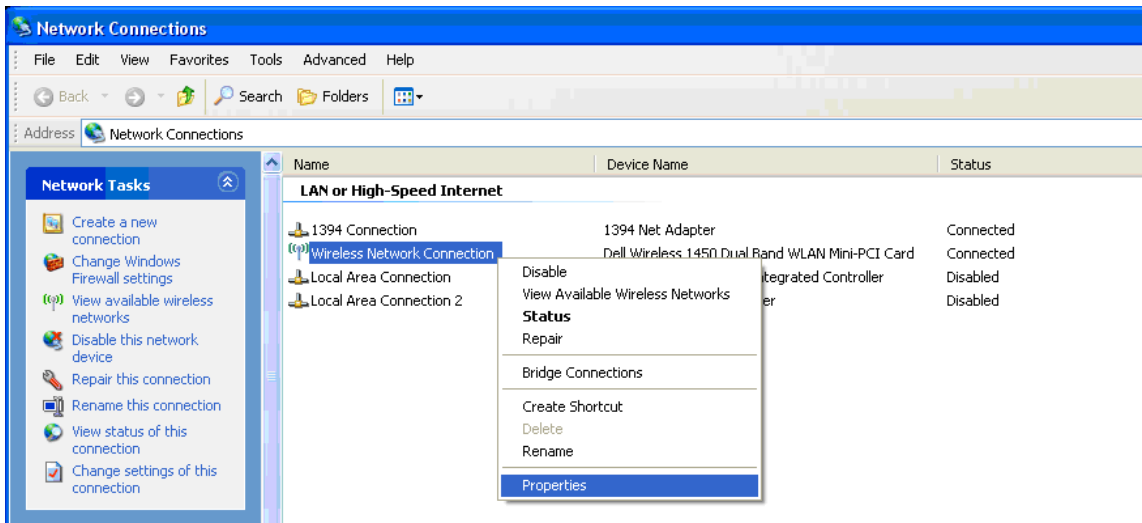
http://www.sites.duq.edu/cts/policies/policy_duqnet_wireless.shtml.

Verify that you have Microsoft Windows XP – SP2 (click Start > right click on My Computer > click Properties > in the General tab) and WindowsXP-KB893357-v2-x86-ENU.exe must be installed to support WPA2 (visit www.microsoft.com and search for KB893357 **OR** WPA2 Hotfix)

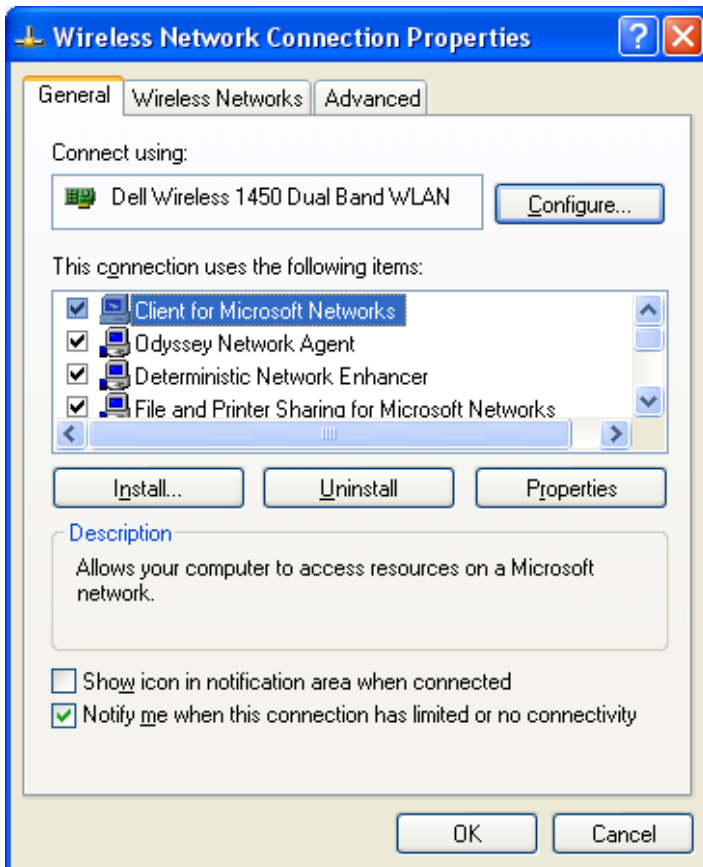
NOTE:

If you have previously set up Windows XP to connect to DuqNet you will first need to remove the connection and then click OK before adding it via the steps again.

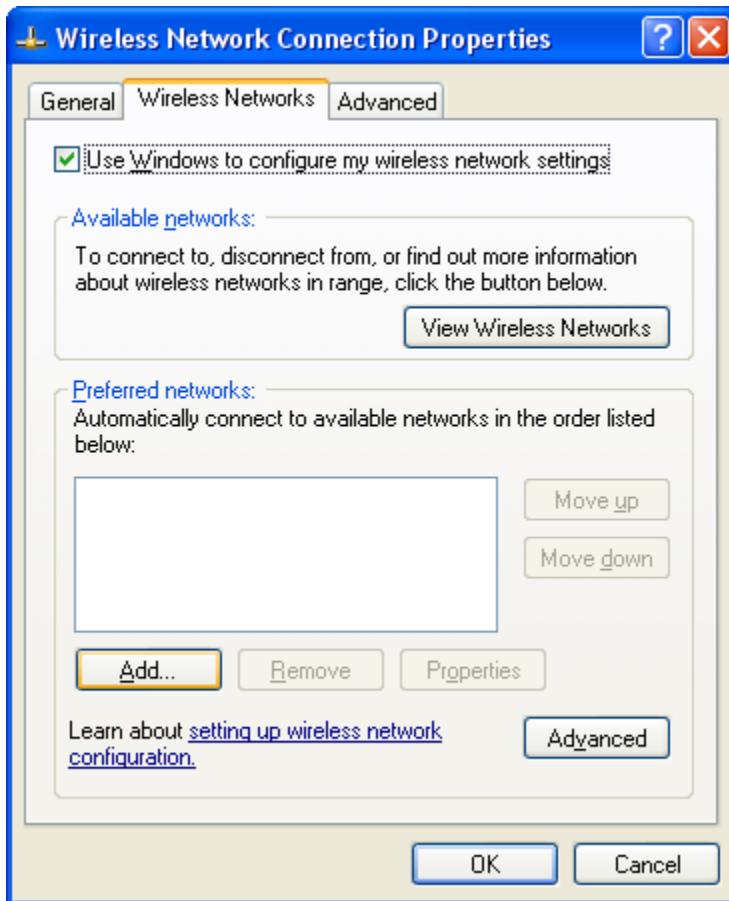
1. Click on **Start** and then **Control Panel**.
2. Open **Network Connections**.
3. Right click on your wireless card and select **Properties** from the contextual menu.



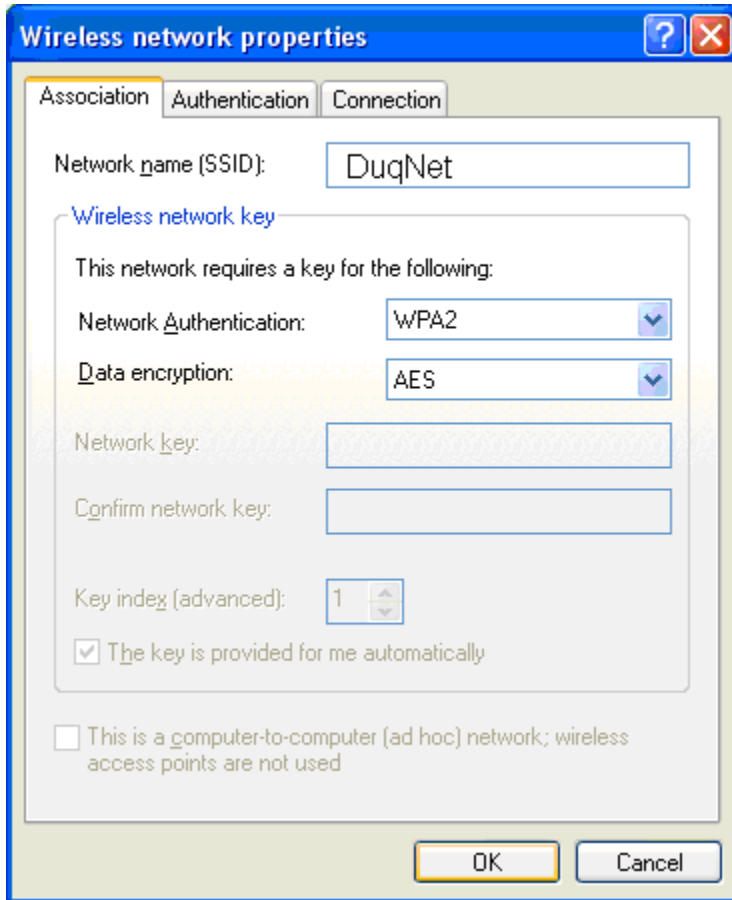
4. The **Wireless Network Connection Properties** window will appear.



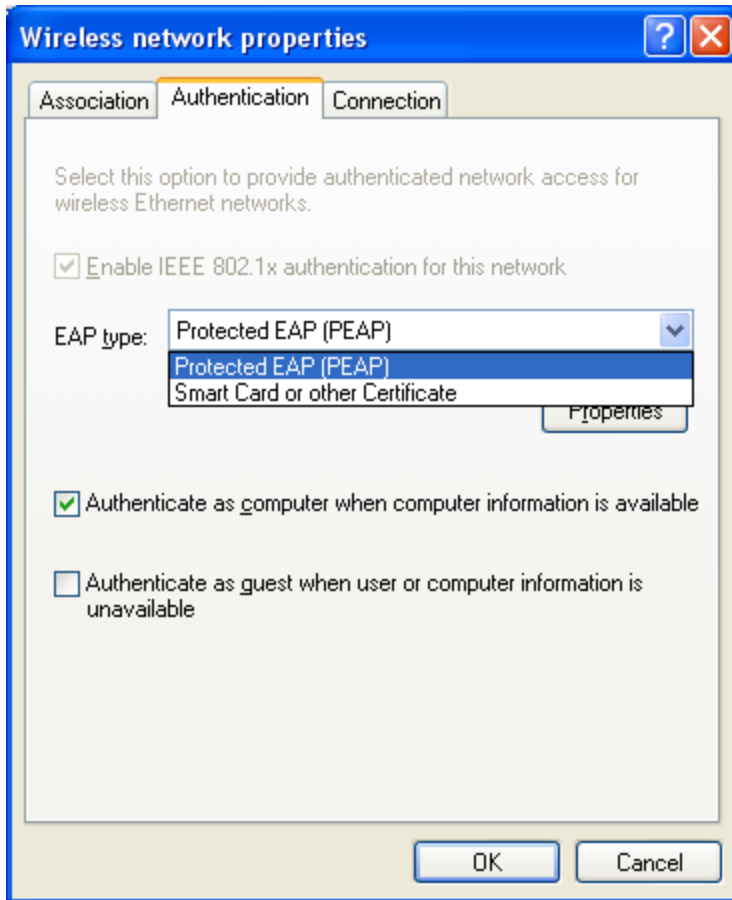
5. Select the **'Wireless Networks'** tab.
6. Click the **'Add'** button in the **Preferred networks:** section.



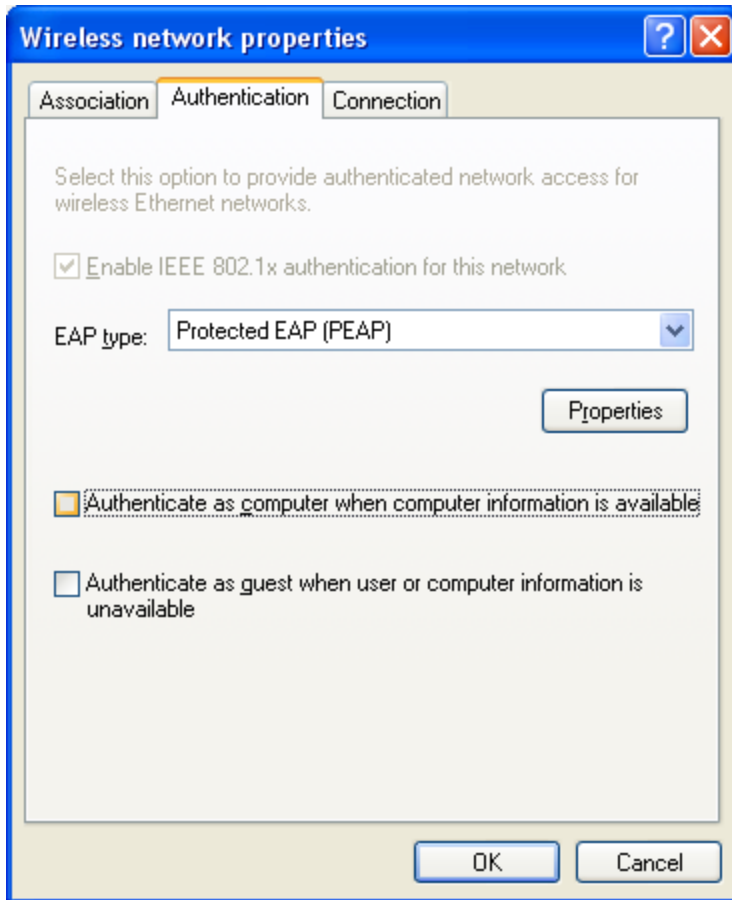
7. Make sure the 'Association' tab is selected. Enter **DuqNet** in the Network name (SSID) field. Change the Network Authentication to **WPA2**. Data encryption should be AES.



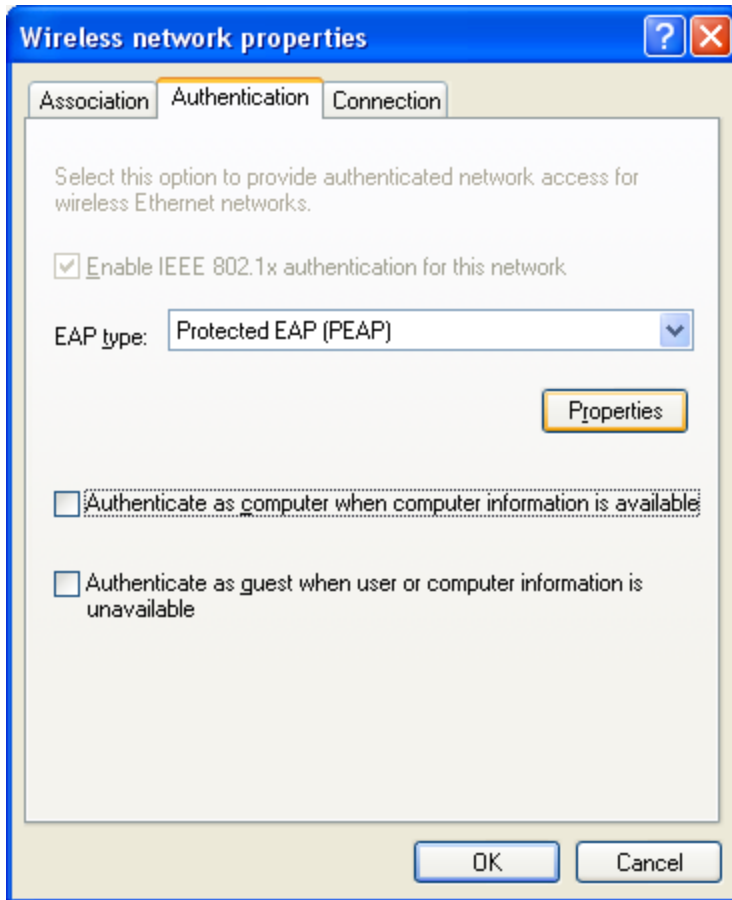
8. Select the **Authentication** tab. Change the EAP type to **Protected EAP (PEAP)**.



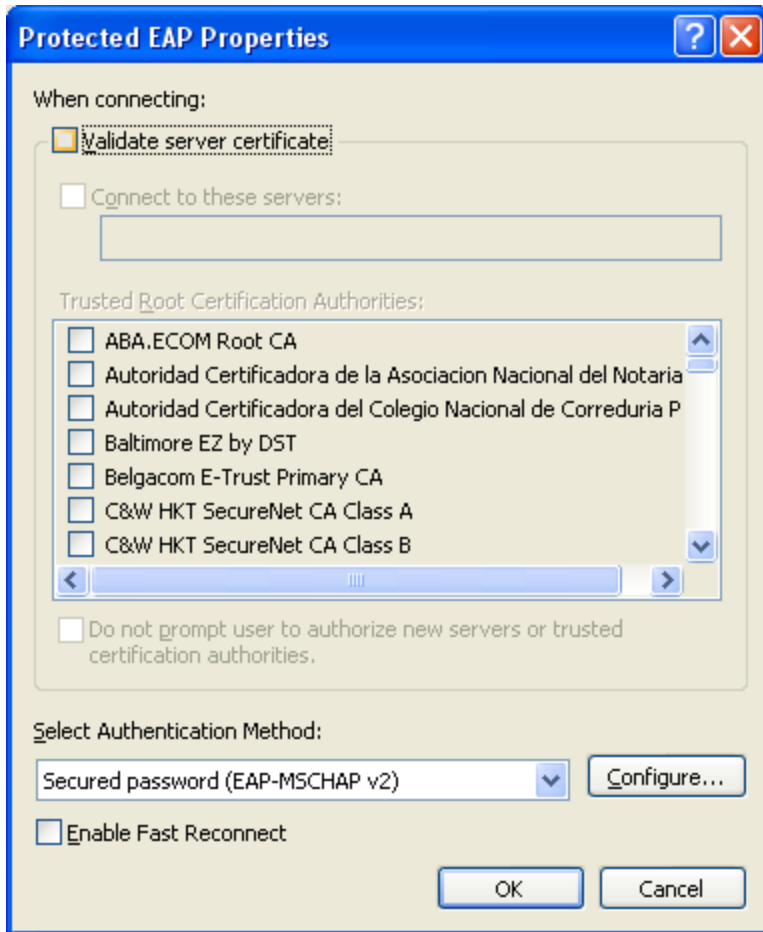
9. **Deselect** the check box for “Authenticate as computer when computer information is available”



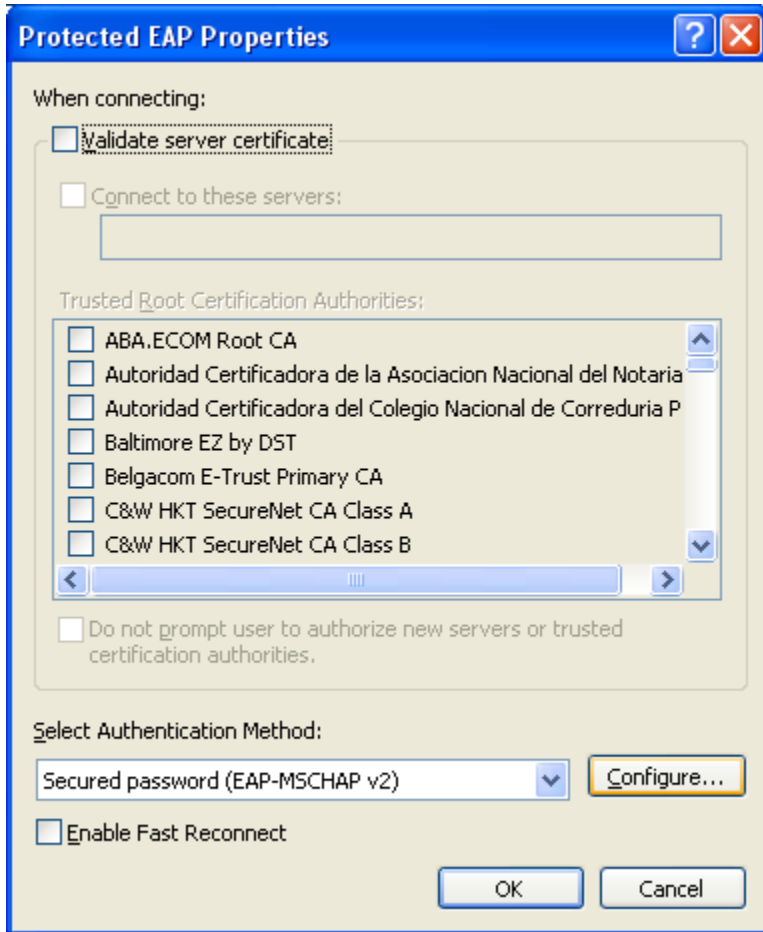
10. Click the **Properties** Button. This will open the Protected EAP Properties window.



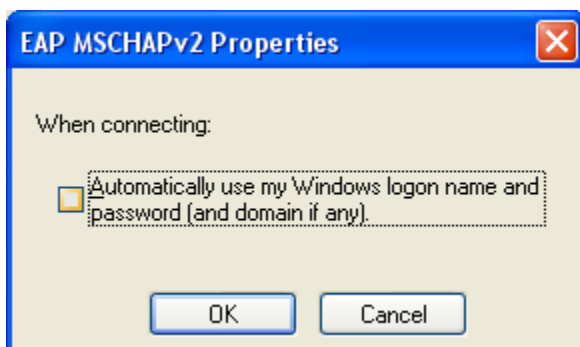
11. Deselect "Validate server certificate"



12. Make sure the Authentication Method is “Secured password (EAP-MSCHAP v2). Click **Configure**. The EAP MSCHAPv2 Properties window will appear.

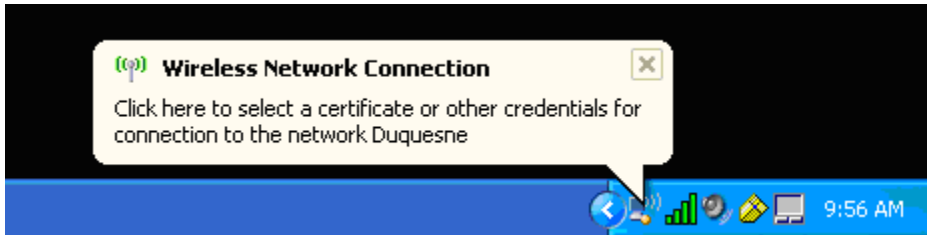


13. **Deselect** the check box for “Automatically use my Windows logon name and password (and domain if any).”



14. Click **OK** to close all open windows.

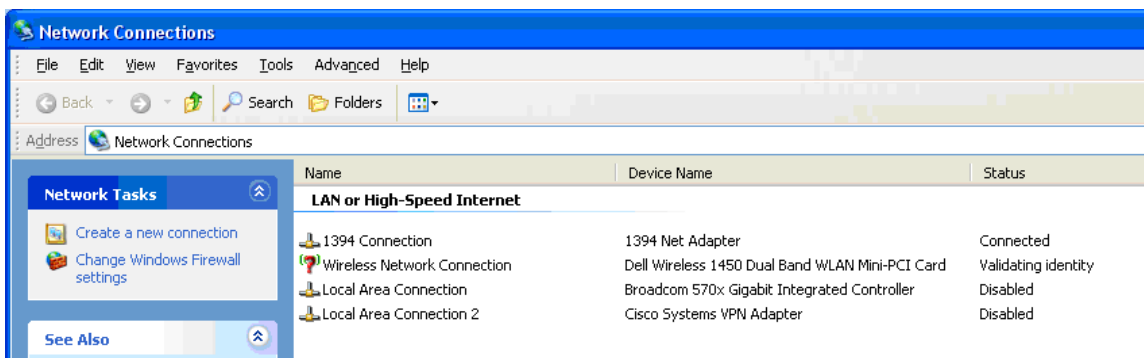
15. Your computer will now attempt to connect to DuqNet. A dialog balloon will appear in your task bar. Click on the Balloon “**Wireless Network Connection – Click here to select a certificate or other credentials for connection to the network Duquesne**”. This will open the “**Enter Credentials**” window. If you are not prompted for credentials please reboot your computer and the popup should appear within 10 minutes or so.



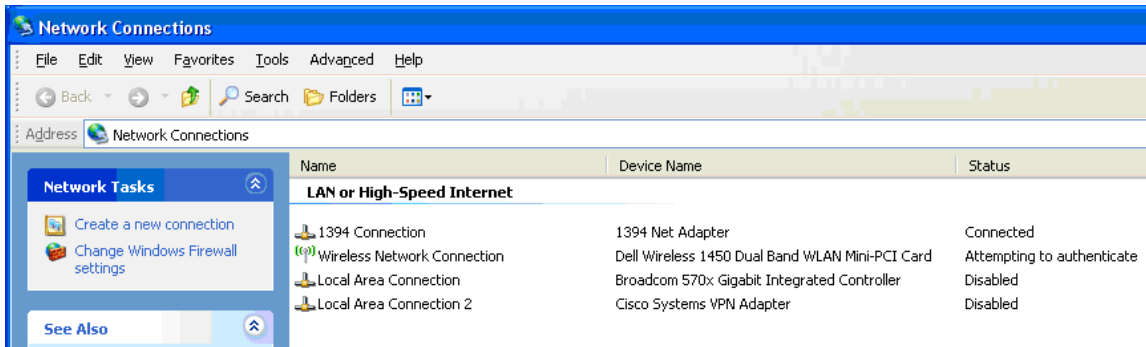
16. Enter your MultiPass username and password you created in step 1 and click OK. Leave the Logon Domain field blank.



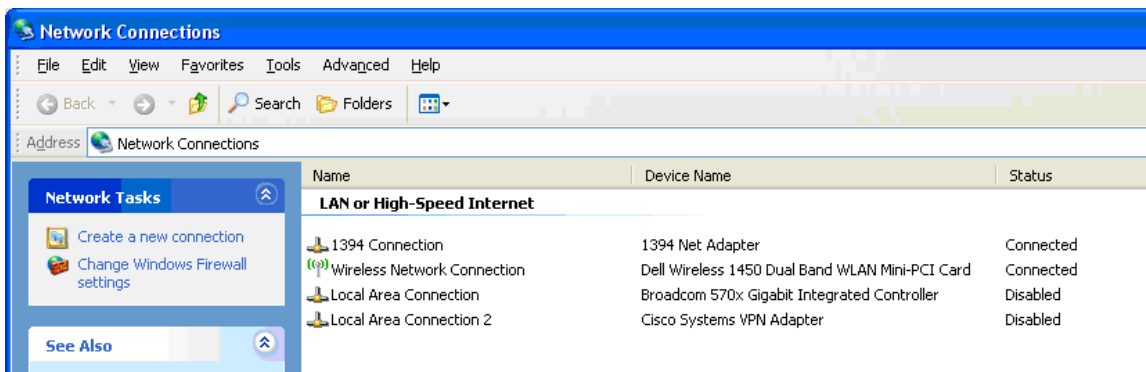
17. In you Network Connection control panel you will see the following in the status column next to you wireless connection. First it will indicate **“Validating Identity”**.



18. The status will change to **Attempting to authenticate**.



19. Once successful the status will change to **Connected**.



Congratulations you have successfully connected to the DuqNet wireless network.