

Connecting to Duquesne's Wireless Network (Windows XP)

Connecting to Duquesne's wireless network using this guide requires that you have the following hardware and software installed:

Software Details:

In order for your system to connect to the Duquesne wireless network your system must support the WPA2 encryption both via your systems hardware and the operating system.

OS Details:

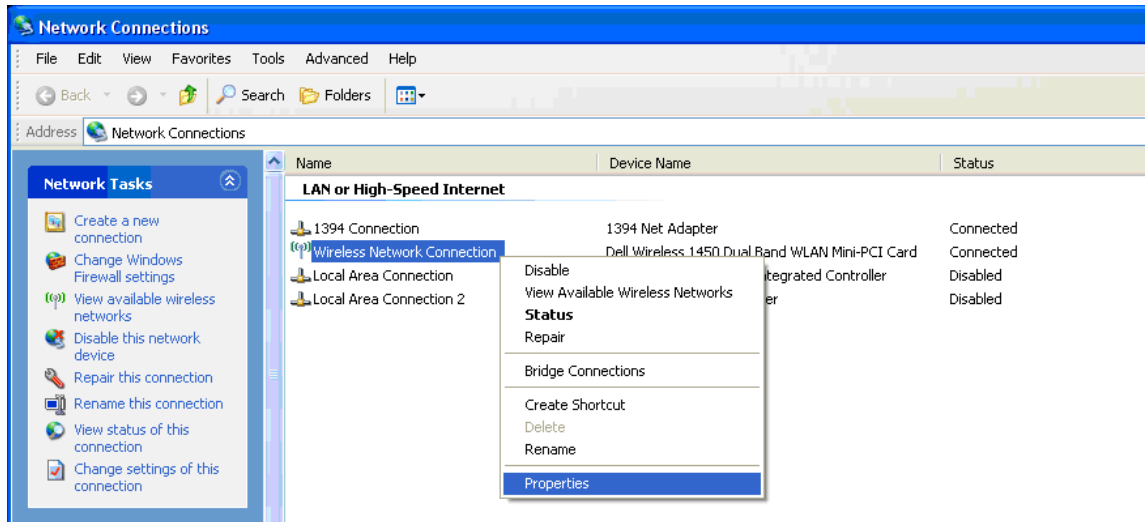
--Microsoft Windows XP with SP2

--WindowsXP-KB893357-v2-x86-ENU.exe must be installed to support WPA2

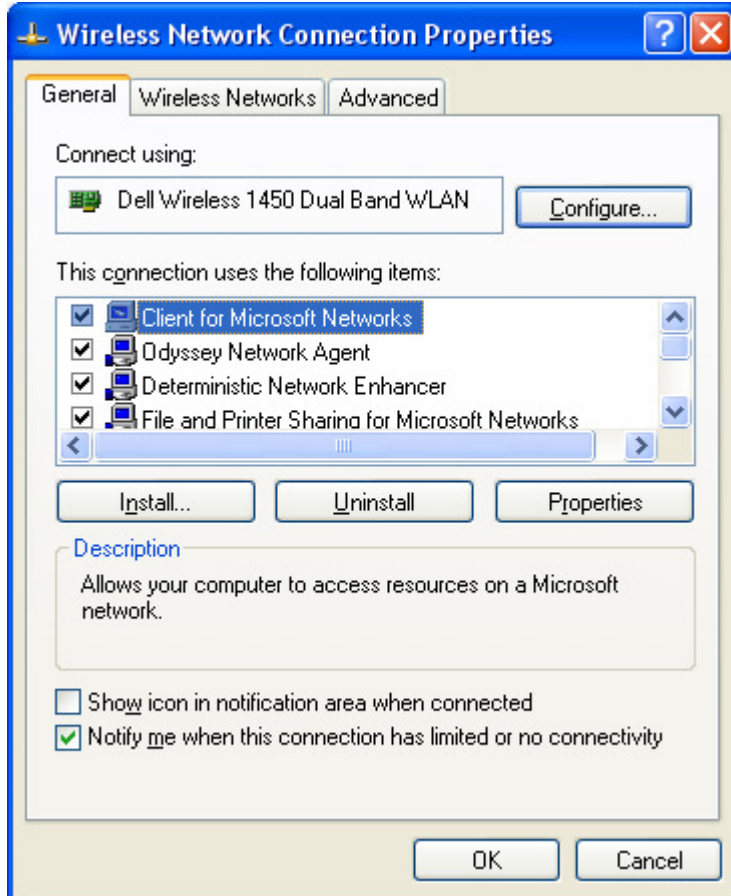
Procedure for adding the DuqNet network to your wireless

1. Prior to configuring your machine for DuqNet wireless you need to initialize your MultiPass account (credentials that you will be using for wireless). To do so, visit www.duq.edu/multipass and click the link for Initialize MultiPass Account. Once you've followed the on-screen prompts and have initialized your account you can proceed with the following instructions. Keep in mind that you will use this password that you've just created to setup your wireless connection.
2. Review the Duquesne's Wireless Airspace Policy:
http://www.sites.duq.edu/cts/policies/policy_duqnet_wireless.shtml.
3. Verify that you have Microsoft Windows XP – SP2 (click Start > right click on My Computer > click Properties > in the General tab) and WindowsXP-KB893357-v2-x86-ENU.exe must be installed to support WPA2 (visit www.microsoft.com and search for KB893357 **OR** WPA2 Hotfix)
4. Update your wireless card drivers. (Visit the manufacturer of your card's website and search for your wireless card model)
5. Open the **Control Panel**, and then **Network Connections**.

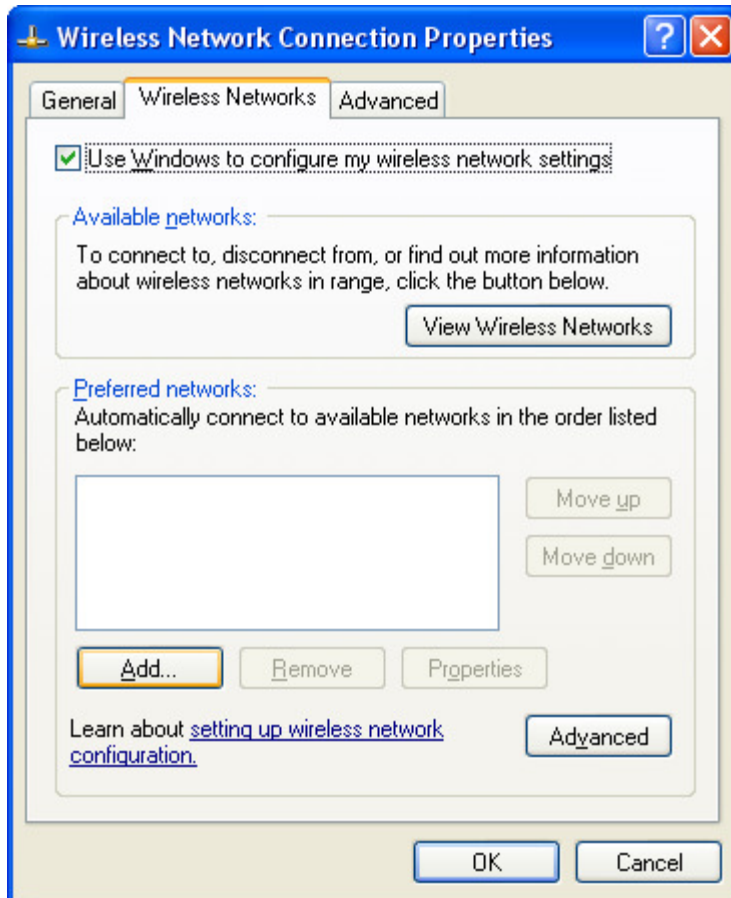
6. Right click on your wireless card and select **Properties** from the contextual menu.



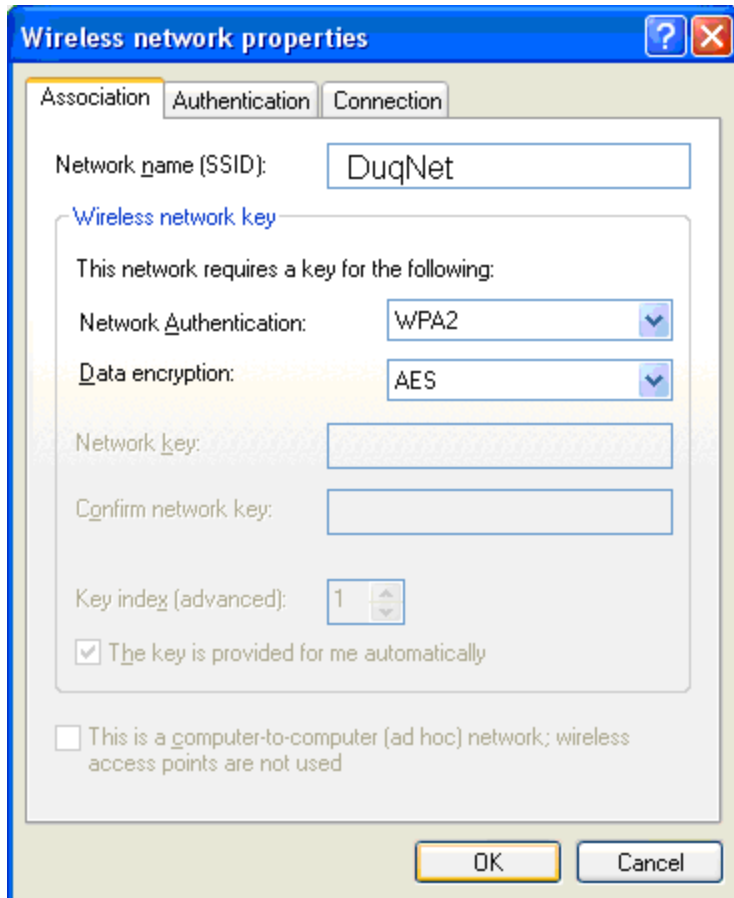
7. The **Wireless Network Connection Properties** window will appear.



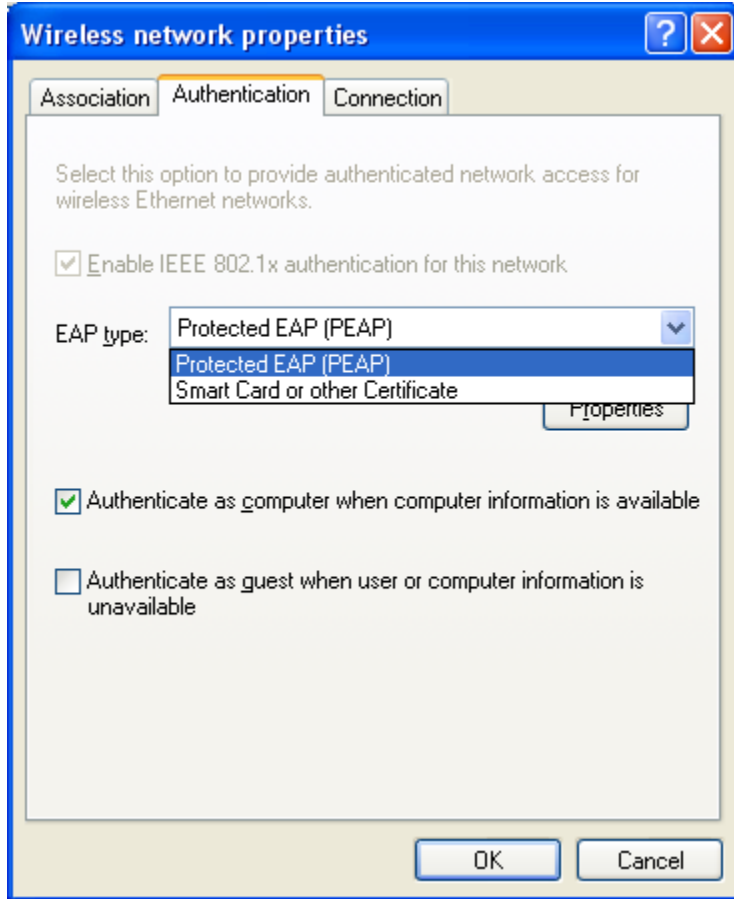
8. Select the **'Wireless Networks'** tab.
9. Click the **'Add'** button in the **Preferred networks** section.



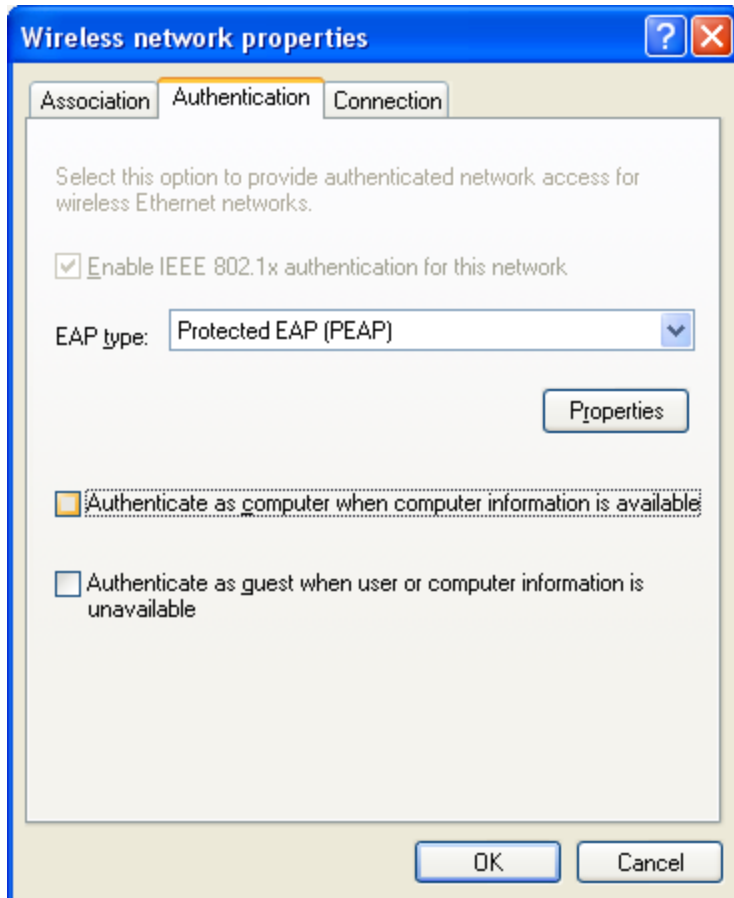
10. Make sure the 'Association' tab is selected. Enter **DuqNet** in the Network name (SSID) field. Change the Network Authentication to **WPA2**. Data encryption should be AES.



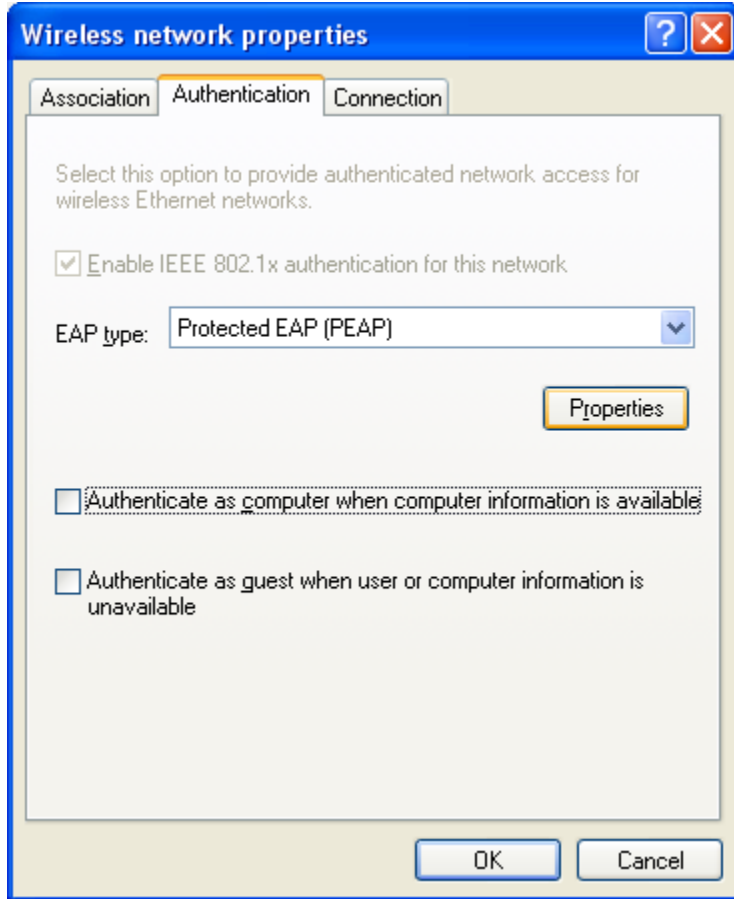
11. Select the **Authentication** tab. Change the EAP type to **Protected EAP (PEAP)**.



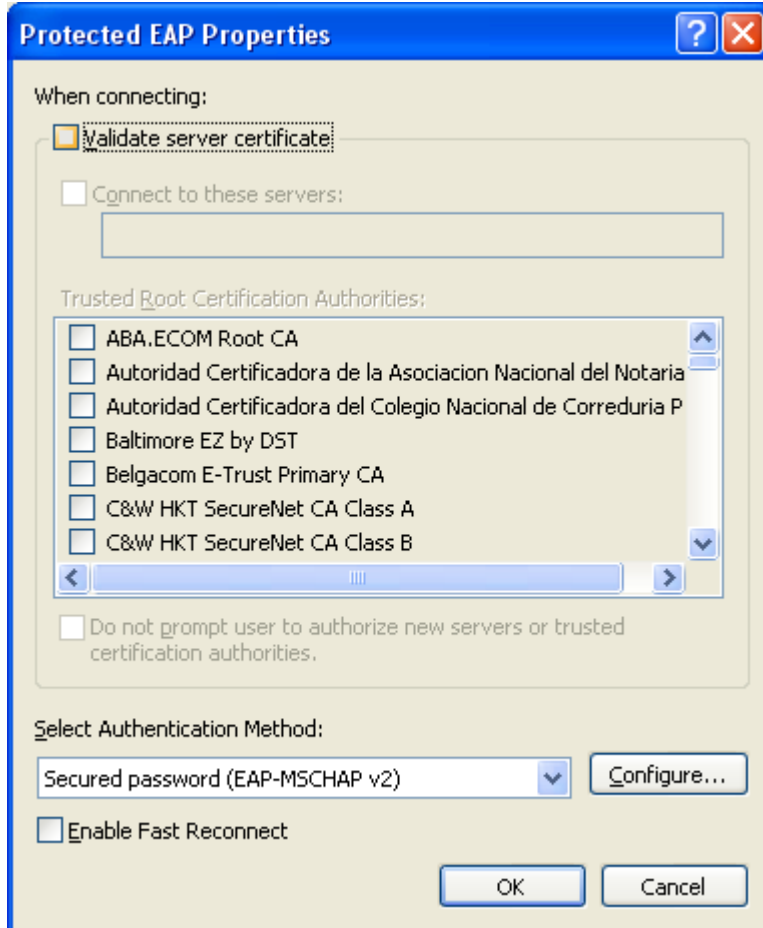
12. **Deselect** the check box for “Authenticate as computer when computer information is available”



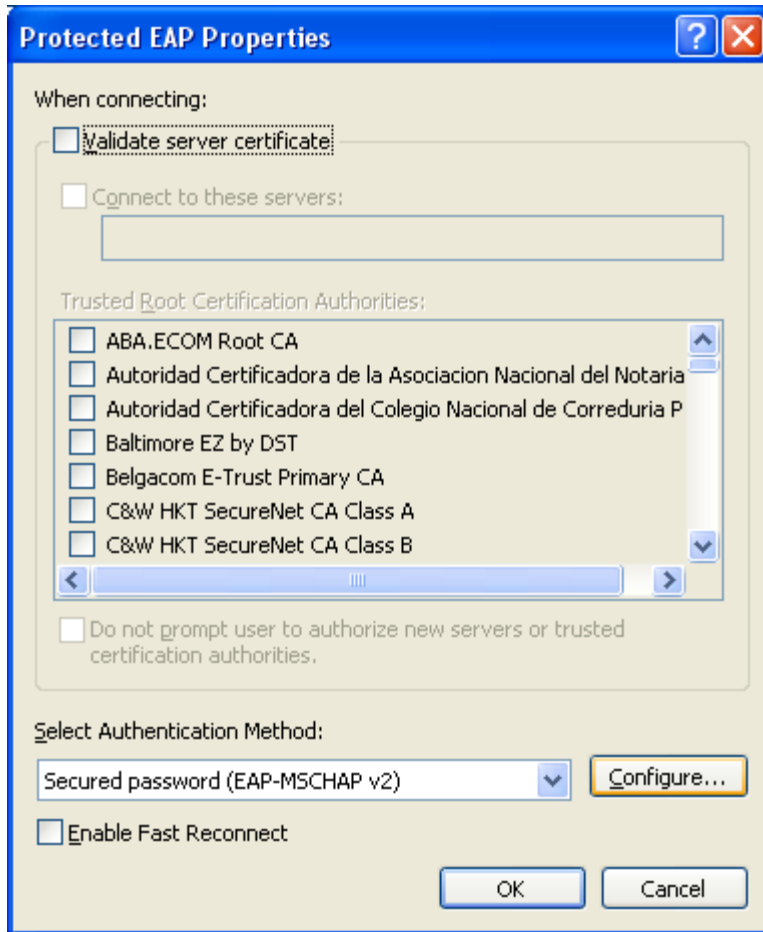
13. Click the **Properties** Button. This will open the Protected EAP Properties window.



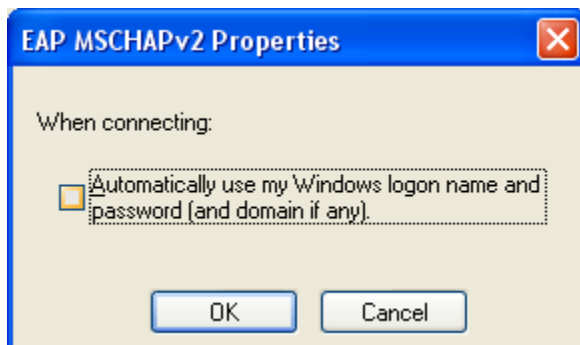
14. **Deselect** “Validate server certificate”



15. Make sure the Authentication Method is “Secured password (EAP-MSCHAP v2). Click **Configure**. The EAP MSCHAPv2 Properties window will appear.

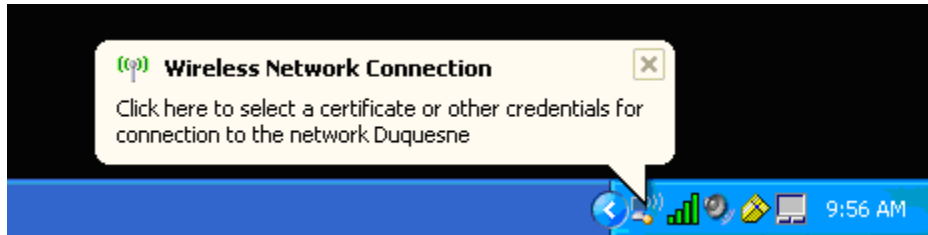


16. **Deselect** the check box for “Automatically use my Windows logon name and password (and domain if any).”



17. Click **OK** to close all open windows.

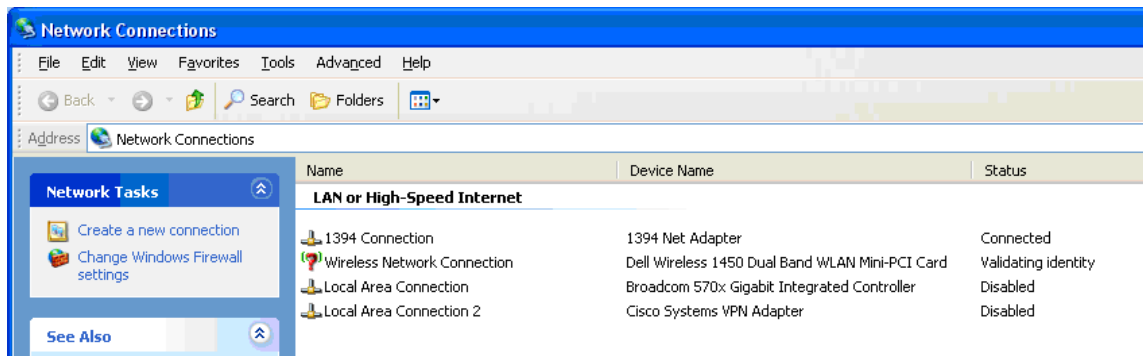
18. Your computer will now attempt to connect to DuqNet. A dialog balloon will appear in your task bar. Click on the Balloon “**Wireless Network Connection – Click here to select a certificate or other credentials for connection to the network Duquesne**”. This will open the “**Enter Credentials**” window. If you are not prompted for credentials please reboot your computer and the popup should appear within 10 minutes or so.



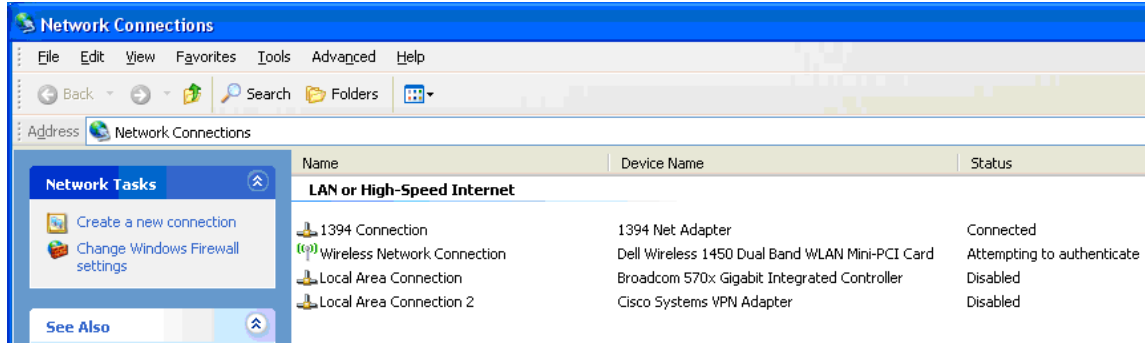
19. Enter your MultiPass username and password you created in step 1 and click OK. Leave the Logon Domain field blank.



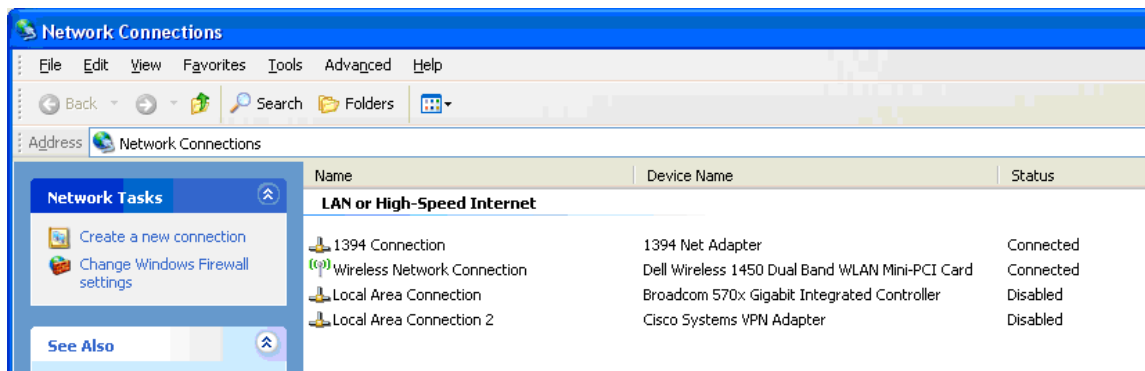
20. In your Network Connection control panel you will see the following in the status column next to your wireless connection. First it will indicate “**Validating Identity**”.



21. The status will change to **Attempting to authenticate**.



22. Once successful the status will change to **Connected**.



23. Congratulations you have successfully connected to the Duquesne network.