



**DUQUESNE UNIVERSITY**

School of Law

## BY THE NUMBERS

# 86.73%

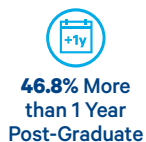
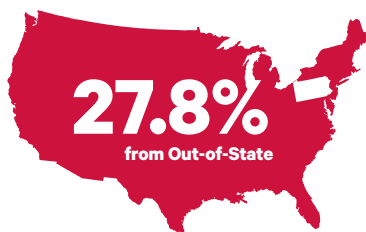
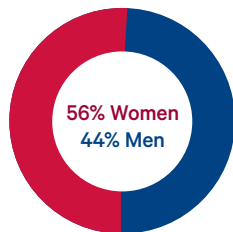
## first-time pass rate

*(third in state)*

Pennsylvania Bar Exam, July 2018

### ENTERING CLASS OF 2018

LSAT			GPA		
<b>154</b>	<b>152</b>	<b>150</b>	<b>3.68</b>	<b>3.38</b>	<b>3.12</b>
75th Percentile	Median	25th Percentile	75th Percentile	Median	25th Percentile



### LAUNCH YOUR LEGAL EDUCATION HERE

- 4** Programs
  - J.D. Full-Time Day
  - J.D. Part-Time Evening
  - J.D. Part-Time Day
  - LL.M. for Foreign Attorneys
- 5** Dual and Joint Degrees 
- 3** Study Abroad Programs in China and Europe
- 15** Clinical and Fellowship Programs including:
  - Veterans Clinic
  - Pennsylvania Innocence Project
  - Urban Development Practicum
  - Juvenile Defender Clinic
  - Federal Litigation Clinic

Statistics as of September 2018 Duquesne University School of Law participates in the American Bar Association's matriculation validation service. LSAT and GPA percentiles have been verified by the Law School Admission Council, based on matriculant lists provided by Duquesne Law.

# DUQUESNE UNIVERSITY SCHOOL OF LAW PITTSBURGH, PENNSYLVANIA

**90+**  
Neighborhoods with  
Affordable Housing Options

**3 Blocks from Campus to Heart of  
Downtown Pittsburgh and**

- Law Firms**
- Nonprofit Institutions**
- Government Agencies**
- Courthouses**
- Corporate Offices**

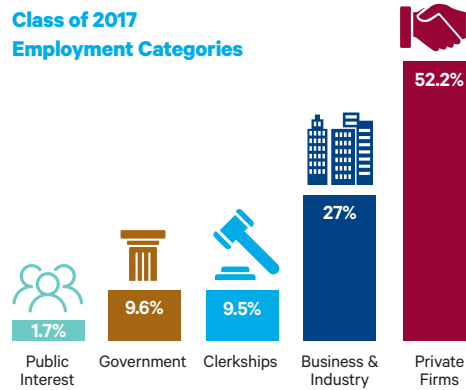
**8,000**  
Practicing Attorneys  
Throughout the Region



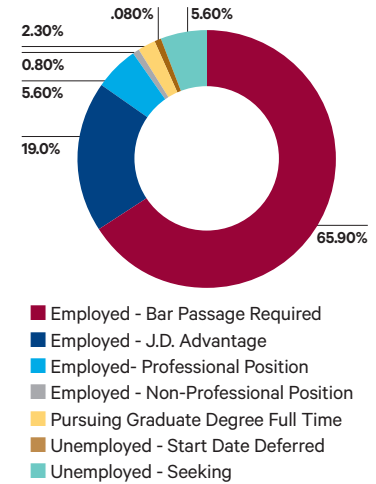
## CAREER CONNECTIONS

**7,800**  
Duquesne Law Alumni

### Class of 2017 Employment Categories



### Employment Status of All Class of 2017 Graduates



All employment statistics are 10 months after graduation as reported to the ABA. This document does not include the complete data the School of Law is required to disclose under ABA Standard 509. The complete data can be found online at [duq.edu/law/career-services](http://duq.edu/law/career-services).

## SCHOLARSHIPS

Competitive Merit Scholarships Available



## CONTACT

- [duq.edu/law](http://duq.edu/law)
- [lawadmissions@duq.edu](mailto:lawadmissions@duq.edu)
- 412.396.6296
- @DuquesneLaw
- @DuquesneLaw

