

SCANTRON SHEET ORDERING INFORMATION

Scantron sheets must be ordered directly from Scantron ([\(800\) 347-7704](tel:8003477704)).

Click www.scantronstore.com

Click **Register**

Click **Register as a current customer**

- Use Duquesne's organization ID number 101000909 to complete your registration form
- Shipping address should be General Stores at 913 Bluff Street



Part Number: 95677

Test Sheet 100/W (500/PKG)

Form Number: **95677**

Form Size: 8½" x 11", 2-sided

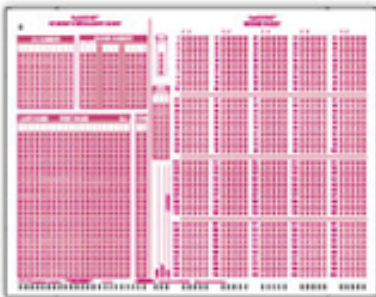
Form Description:

- 100 Questions
- 5 Response Choices (A-E)
- Designated area for bar code label
- Write-in area on back side
- Requires pencil read scanner
- iNSIGHT 20 & iNSIGHT 30 compatible

[View PDF](#)

Unit Price: \$64.00 PACKAGE

Quantity:



Part Number: F-1712-PAR-L

F-1712-PAR-L Enrollment 200 Items (500/PKG)

Form Number: **F-1712-PAR-L**

Form Size: 8½" x 11", 2-sided

Form Description:

- Student Enrollment
- 200 Questions
- 5 Response Choices (A-E)
- Mini Blue Book (Side 2)
- F-1712-PAR-L is compatible with QuickScore II
- Printed in iNSIGHT 20/30 ink safe colors
- Compatible with OpScan, iNSIGHT, ScanMark, and ES desktop scanners

[View PDF](#)

Unit Price: \$62.00 PACKAGE

Quantity: